

Date:	Location:
Type:	Project:
Catalog #:	

Altair Series

Large LED Area Luminaire
with Revolutionary eQuantum Optical System



The Altair family of LED area luminaires feature modern styling and a sleek architectural profile. The fixture is smaller than bulky, traditional 'shoe box' luminaires for easier handling and installation. The Altair utilizes state of the art LEDs combined with advanced eQuantum optics for precise control and energy-efficiency.

Typical applications include: Street and area lighting, parking lots/garages, site lighting, parks, industrial, retail and sports lighting.



Product Performance

- Wattage Range: 310W-639W
- Low glare due to small Mid-power LEDs driven at low drive currents (refer to specific IES file for drive current)
- Input Voltage: 120-277V, 277-480V
- 20kA surge protection standard
- CCT: 3000K, 4000K and 5000K, Amber available*
- CRI: 80 and 90 CRI*
- UL1598 Compliant
- Driver mounted quick change component door with retaining cable
- Optional universal pole mounting kit available
- 0-10V dimmable power supply
- 5 year warranty (materials and workmanship)

* Consult factory for additional options

Key Data	
Model	ALQ-L
Lumen Range	40,000-70,000
Wattage Range	310-639
Efficacy Range	Up to 136 LPW
Fixture Life	L70@25°C > 100,000 hours
Dimensions	25.6" x 14.1" x 4.8"
Weight	28.0 lbs
EPA	0.52

Product Specifications

Construction & Materials

- Multi stage pre-treatment and high-durability TGIC powder coat finish, optional anodized pre-treatment marine finish
- PMMA (Polymethyl methacrylate) high durability, non-discoloring lens
- Twist Lock receptacle accommodates industry standard 5-pin and 7-pin sensors
- Robust low profile design

Electrical System

- Input Voltage: 120-277VAC, 277-480VAC
- Power Factor: > 0.9
- Total Harmonic Distortion: <20%
- 20kA surge protection standard
- Operating Temperature Range: -40°C to 60°C

Optical System

- Type II, III, IV, V square, FR (Auto Dealer Front Row) and TC (Tennis/Pickle Ball Court)

Testing & Certifications

- cETLus Listed
- UL1598, CSA STD.22.2 compliant
- IK07 Impact Rated
- 3G Vibration Rated
- IP66 Rated
- RoHS Compliant
- Meets ARRA requirements
- DesignLights® Consortium Qualified

Lumen Maintenance

L70@ 25°C >100,000 hours



Altair Series

Ordering Information Example: ALQ-L-4M-60-4K8-MV-SV-PA-OC1-L3

Catalog Number:

Series	Distribution	Output Type ²	CCT Code	Voltage	Fixture Color
ALQ-L - Large	2M - Type 2, Medium	ALQ-L	3K8 - 3000K, 80 CRI	MV - 120-277V	WH - White
	3M - Type 3, Medium	40 - 40,000 Lumens, 310W	4K8 - 4000K, 80CRI	HV - 277-480V	SV - Silver
	4M - Type 4, Medium	45 - 45,000 Lumens, 348W	AMK - Amber (Specific Lumen Output)		BL - Black
	5MQ - Type 5, Square	50 - 50,000 Lumens, 380W	Other CCTs - Consult Factory		BZ - Bronze
	FR - Auto Dealer Front Row	55 - 55,000 Lumens, 477W			TC - Green
	TC - Tennis/Pickleball Courts	60 - 60,000 Lumens, 541W			RAL - Custom Color (Specify RAL)
	COO ¹ - Custom Optic Orientation	65 - 65,000 Lumens, 583W 70 - 70,000 Lumens, 639W			

SLO - Specific Lumen Output

Mounting Options ³	Options (Factory Installed)
-------------------------------	-----------------------------

PA - Square pole mounting arm kit (adapts to 4.0" round pole)
 UM - Universal arm mount for square or round pole (4.0" min round pole)
 SK - Adjustable slip fitter knuckle (fits 2.5" OD tenon)
 WM - Wall mount kit
 TN - Tenon Adapter

P7⁴ - NEMA 7-Pin Receptacle 110-480V SFXXX⁵ - Single Fuse (120, 277, 347)
 PMT - NEMA Photocontrol 105-285V DFXXX⁵ - Double Fuse (208, 240, 480)
 P347 - NEMA Photocontrol 347V CBS-450 - SimplySNAP Central Base Station, Includes SS450
 P480 - NEMA Photocontrol 480V SS450 - SimplySNAP On-Site Controller, WiFi, Metal Enclosure
 PSC - Photocell Shorting Cap TL7-HV - 7-Pin Twist Lock for SimplySNAP, 110-480V
 HSS - House Side Shield
 TE - Tool Less Entry
 Custom External Shield (Consult Factory)
 OC1 - Integrated Occupancy Sensor (120-277VAC), [Wattstopper FSP211](#)
 OC4 - Integrated Occupancy Sensor (100-480VAC), [Wattstopper FSP221](#)
 L2 - Sensor FSP-L2 Lens, 360°, 48" Dia. Coverage at 8' Height or 72" Dia. Coverage at 12' Height
 L3 - Sensor FSP-L3 Lens, 360°, 40" Dia. Coverage at 20' Height
 L7 - Sensor FSP-L7 Lens, 360°, 100" Dia. Coverage at 40' Height
 AN - Marine Grade Pre-Anodized Finish with ASTM 316 Stainless Steel Fasteners

¹ Specify custom optic orientation details

² See page 5 for specific lumen outputs for each distribution

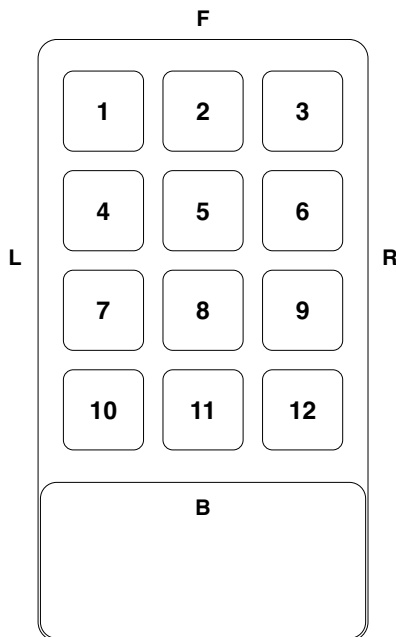
³ Consult factory for custom mounting solutions

⁴ P7 will work for 3-pin receptacle, includes photocontrol shorting cap

⁵ Specify voltage (XXX = 120, 277, etc)

See pages 6-7 for mounting dimensions and details

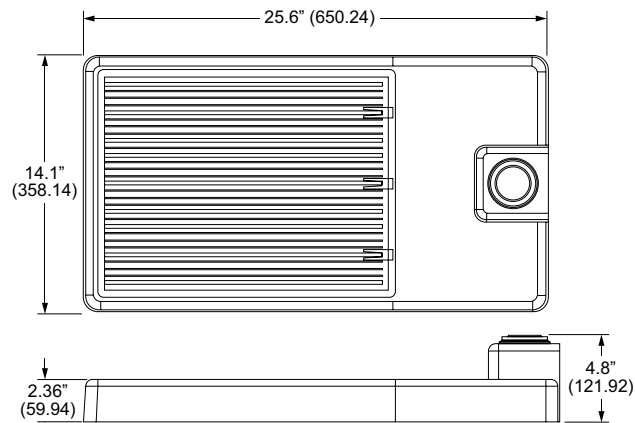
Custom Optic Orientation Details (For COO Distribution Only)



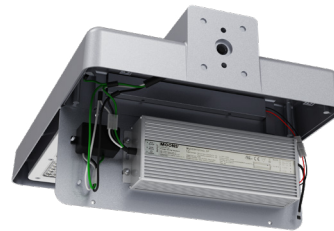
Position	Distribution (3M, 4M, 5MQ, FR, TC)	Orientation (F, B, L, R)
1		
2		
3		
4		
5		
6		
7		
8		
9		
10		
11		
12		

Altair Series

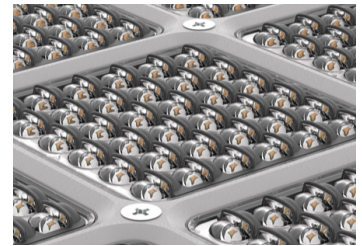
Dimensions



ALQ-L EPA: 0.52 Weight: 28.0 lb



Driver mounted quick change component door with retaining cables



Optional House Side Shield (HSS)

SimplySNAP Option Details

- Multiple Zones, Behaviors, Events, and Schedules
- SimplySNAP creates a Wi-Fi connection to smart phone, tablet, or PC
- Optional SimplySNAP Remote Access (SSRA) service available
- Sunrise and Sunset Schedules driven by latitude and longitude
- Energy saving features including Daylight Harvesting and Demand Response
- Integrated Photocell
- NEMA/ANSI C136.41 7-pin Dimming Receptacle Support
- ANSI C136.52 Power Monitoring
- Remote control and scheduling
- Flexible Dimming Controls
- Secure, over-the-air upgrades to support future enhancements
- Seamless integration into the SimplySNAP lighting control system
- 24V DC Power for Motion Sensors
- Does not include 7-pin receptacle



SS450



CBS-450



TL7-HV

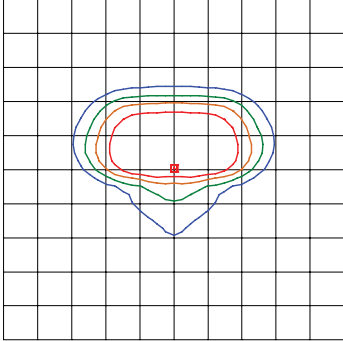
The information in this document is subject to change without notice.

Altair Series

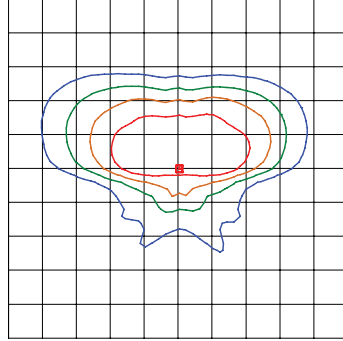
Photometry

Lumen values are from photometric tests performed in accordance with IESNA LM-79-08. Data is considered to be representative of the configuration shown. Actual performance may differ as a result of end user environment and application. [Visit the Altair webpage](#) to download a complete set of photometric charts, IES files and more.

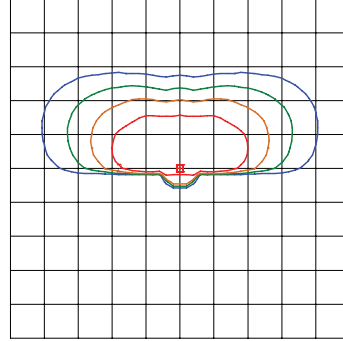
Type 2, Medium



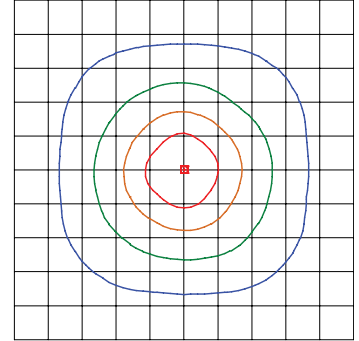
Type 3, Medium



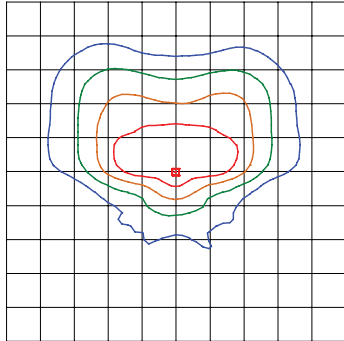
Type 3, Medium - HSS



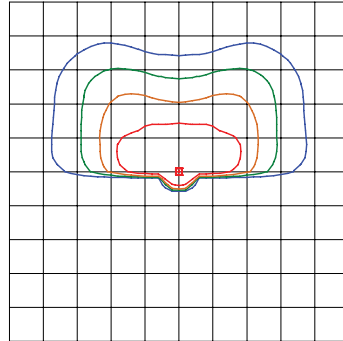
Type 5, Square



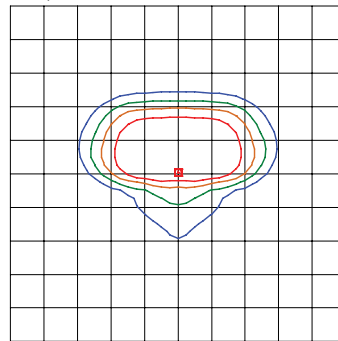
Type 4, Medium



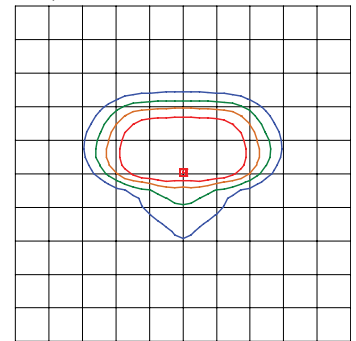
Type 4, Medium - HSS



TC, Tennis/Pickleball Courts

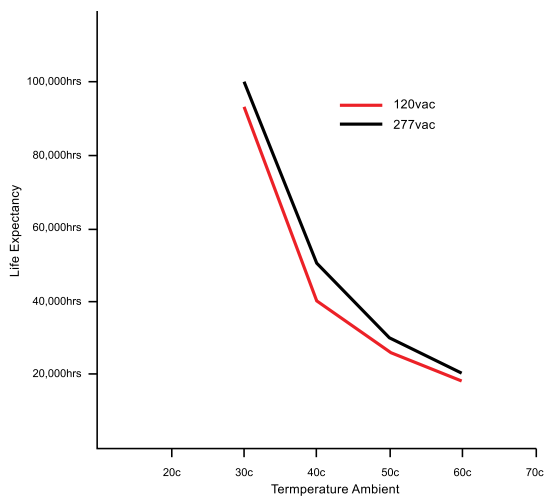


FR, Auto Dealer Front Row



Thermal De-Rating Curve

Life expectancy vs ambient temperature



The information in this document is subject to change without notice.

Altair Series

Optical Performance (All values are for 4000K CCT, 70 CRI)

MODEL/WATTS	DISTRIBUTION	STREETSIDE LUMENS	HOUSESIDE LUMENS	TOTAL LUMENS	LPW	B	U	G
ALQ-L-40 310W (4000K, 70 CRI)	2M	34413.2 (86.1%)	5575.7 (13.9%)	39988.9	129	3	0	2
	3M	34681.6 (82.3%)	7442.2 (17.7%)	42123.8	135.9	4	0	5
	3M-HSS	27099.4 (91.9%)	2386.4 (8.1%)	29485.8	95.1	2	0	4
	4M	33016.6 (81.3%)	7581.3 (18.7%)	40597.9	131	4	0	5
	4M-HSS	28848.7 (92.3%)	2411.1 (7.7%)	31259.8	100.8	2	0	5
	5MQ	20266.6 (48.8%)	21248.9 (51.2%)	41515.5	133.9	5	0	5
	FR	34413.2 (86.1%)	5575.7 (13.9%)	39988.9	129	3	0	2
	TC	34413.2 (86.1%)	5575.7 (13.9%)	39988.9	129	3	0	2

MODEL/WATTS	DISTRIBUTION	STREETSIDE LUMENS	HOUSESIDE LUMENS	TOTAL LUMENS	LPW	B	U	G
ALQ-L-50 380W (4000K, 70 CRI)	2M	41512.0 (86.1%)	6725.8 (13.9%)	48237.8	126.9	3	0	3
	3M	41836.3 (82.3%)	8977.4 (17.7%)	50813.7	133.7	4	0	5
	3M-HSS	32691 (91.9%)	2878.8 (8.1%)	35569.8	93.6	2	0	5
	4M	39827.6 (81.3%)	9145.3 (18.7%)	48972.9	128.9	4	0	5
	4M-HSS	34800.3 (92.3%)	2908.6 (7.7%)	37708.9	99.2	2	0	5
	5MQ	24447.3 (48.8%)	25632.3 (51.2%)	50079.6	131.8	5	0	5
	FR	41512.0 (86.1%)	6725.8 (13.9%)	48237.8	126.9	3	0	3
	TC	41512.0 (86.1%)	6725.8 (13.9%)	48237.8	126.9	3	0	3

MODEL/WATTS	DISTRIBUTION	STREETSIDE LUMENS	HOUSESIDE LUMENS	TOTAL LUMENS	LPW	B	U	G
ALQ-L-60 541W (4000K, 70 CRI)	2M	51590.7 (86.1%)	8358.8 (13.9%)	59949.5	110.8	3	0	3
	3M	51993.6 (82.3%)	11157.1 (17.7%)	63150.7	116.7	4	0	5
	3M-HSS	40628 (91.9%)	3577.7 (8.1%)	44205.6	81.7	2	0	5
	4M	49497.2 (81.3%)	11365.6 (18.7%)	60862.8	112.5	4	0	5
	4M-HSS	43249.0 (92.3%)	3614.7 (7.7%)	46863.7	86.62	2	0	5
	5MQ	30382.4 (48.8%)	31855.1 (51.2%)	62237.5	115	5	0	5
	FR	51590.7 (86.1%)	8358.8 (13.9%)	59949.5	110.8	3	0	3
	TC	51590.7 (86.1%)	8358.8 (13.9%)	59949.5	110.8	3	0	3

MODEL/WATTS	DISTRIBUTION	STREETSIDE LUMENS	HOUSESIDE LUMENS	TOTAL LUMENS	LPW	B	U	G
ALQ-L-70 639W (4000K, 70 CRI)	2M	58424.4 (86.1%)	9466.0 (13.9%)	67890.4	106.2	4	0	4
	3M	58881.4 (82.3%)	12635.1 (17.7%)	71516.5	111.9	4	0	5
	3M-HSS	46009.7 (91.9%)	4051.7 (8.1%)	50061.4	78.3	3	0	5
	4M	56053.6 (81.3%)	12871.2 (18.7%)	68924.7	107.9	4	0	5
	4M-HSS	48978.2 (92.3%)	4093.5 (7.7%)	53071.7	83.1	3	0	5
	5MQ	34407.4 (48.8%)	36075.0 (51.2%)	70482.3	110.3	5	0	5
	FR	58424.4 (86.1%)	9466.0 (13.9%)	67890.4	106.2	4	0	4
	TC	58424.4 (86.1%)	9466.0 (13.9%)	67890.4	106.2	4	0	4

MODEL/WATTS	DISTRIBUTION	STREETSIDE LUMENS	HOUSESIDE LUMENS	TOTAL LUMENS	LPW	B	U	G
ALQ-L-45 348W (4000K, 70 CRI)	2M	37557.7 (86.1%)	6085.1 (13.9%)	43642.8	125.4	3	0	3
	3M	37851.5 (82.3%)	8122.3 (17.7%)	45973.8	132.1	4	0	5
	3M-HSS	29576.3 (91.9%)	2604.5 (8.1%)	32180.8	92.5	2	0	4
	4M	36033.5 (81.3%)	8274.1 (18.7%)	44307.6	127.3	4	0	5
	4M-HSS	31485.4 (92.3%)	2631.5 (7.7%)	34116.8	98	2	0	5
	5MQ	22118.3 (48.8%)	23190.4 (51.2%)	45308.7	130.2	5	0	5
	FR	37557.7 (86.1%)	6085.1 (13.9%)	43642.8	125.4	3	0	3
	TC	37557.7 (86.1%)	6085.1 (13.9%)	43642.8	125.4	3	0	3

MODEL/WATTS	DISTRIBUTION	STREETSIDE LUMENS	HOUSESIDE LUMENS	TOTAL LUMENS	LPW	B	U	G
ALQ-L-55 477W (4000K, 70 CRI)	2M	47415.5 (86.1%)	7682.3 (13.9%)	55097.8	115.5	3	0	3
	3M	47785.6 (82.3%)	10254.1 (17.7%)	58039.7	121.7	4	0	5
	3M-HSS	37339.6 (91.9%)	3288.2 (8.1%)	40627.8	85.2	2	0	5
	4M	45491.1 (81.3%)	10445.8 (18.7%)	55936.9	117.3	4	0	5
	4M-HSS	39748.6 (92.3%)	3322.1 (7.7%)	43070.7	90.3	2	0	5
	5MQ	27923.6 (48.8%)	29276.9 (51.2%)	57200.5	120	5	0	5
	FR	47415.5 (86.1%)	7682.3 (13.9%)	55097.8	115.5	3	0	3
	TC	47415.5 (86.1%)	7682.3 (13.9%)	55097.8	115.5	3	0	3

MODEL/WATTS	DISTRIBUTION	STREETSIDE LUMENS	HOUSESIDE LUMENS	TOTAL LUMENS	LPW	B	U	G
ALQ-L-65 583W (4000K, 70 CRI)	2M	55495.1 (86.1%)	8991.4 (13.9%)	64486.5	110.6	4	0	4
	3M	55928.2 (82.3%)	12001.3 (17.7%)	67929.5	116.5	4	0	5
	3M-HSS	43702.2 (91.9%)	3848.5 (8.1%)	47550.7	81.6	3	0	5
	4M	53243.0 (81.3%)	12225.8 (18.7%)	65468.8	112.3	4	0	5
	4M-HSS	46522.5 (92.3%)	3888.3 (7.7%)	50410.8	86.5	3	0	5
	5MQ	32682.1 (48.8%)	34266.3 (51.2%)	66948.4	114.8	5	0	5
	FR	55495.1 (86.1%)	8991.4 (13.9%)	64486.5	110.6	4	0	4
	TC	55495.1 (86.1%)	8991.4 (13.9%)	64486.5	110.6	4	0	4

Lumen Multiplier (CRI)

CRI (70 CRI STD)	Lumen Multiplier
3000K, 80 CRI	0.850
4000K, 80 CRI	0.904
5000K, 80 CRI	0.942

Lumen Multiplier (Temp)

Ambient Temperature	0°C (32°F)	5°C (41°F)	10°C (50°F)	15°C (59°F)	20°C (68°F)	25°C (77°F)	30°C (86°F)	35°C (95°F)	40°C (104°F)	45°C (113°F)	50°C (122°F)
Lumen Multiplier	1.05	1.04	1.03	1.02	1.01	1.00	0.99	0.98	0.97	0.96	0.95

Electrical Load

Refer to specific IES file for drive current

System Watts (ALQ-L)	Current (A)					
	120V	208V	240V	277V	347V	480V
40 - 40,000 Lumens, 310W	2.58	1.49	1.29	1.12	0.89	0.65
45 - 45,000 Lumens, 348W	2.90	1.67	1.45	1.26	1.00	0.73
50 - 50,000 Lumens, 380W	3.17	1.83	1.58	1.37	1.10	0.79
55 - 55,000 Lumens, 477W	3.98	2.29	1.99	1.72	1.37	0.99
60 - 60,000 Lumens, 541W	4.51	2.60	2.25	1.95	1.56	1.13
65 - 65,000 Lumens, 583W	4.86	2.80	2.43	2.10	1.68	1.21
70 - 70,000 Lumens, 639W	5.33	3.07	2.66	2.31	1.84	1.33

The information in this document is subject to change without notice.

Altair Series Accessories

Accessory Guide¹ (Field installed, order as separate line item)

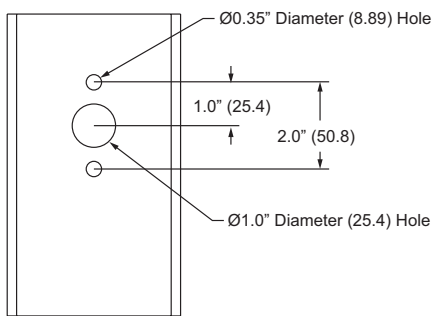
Accessory ²	Description	Accessory ²	Description
PA	Square pole mounting arm kit (adapts to 4.0" round pole)	SKXX	Adjustable slip fitter knuckle (fits 2.5" OD tenon)
UMXX	Universal arm mount for square or round pole (4.0" min round pole)	WMXX	Wall mount kit
		TNXX	Tenon Adapter

¹ Consult factory for custom mounting solutions

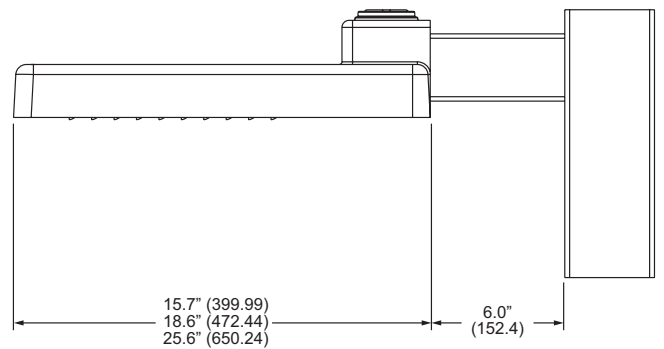
² XX = WH, SV, BL or BZ

All mounting accessories include hardware and necessary gaskets. Refer to installation guide for more details.

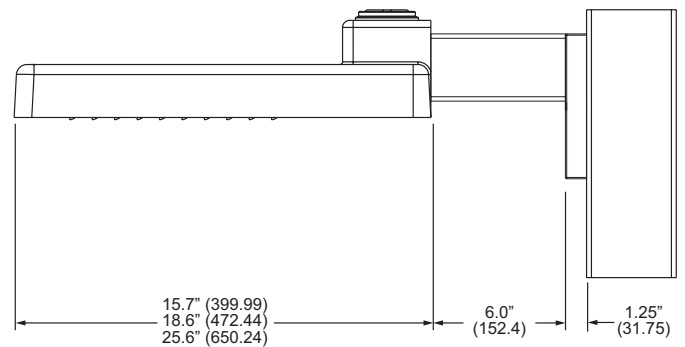
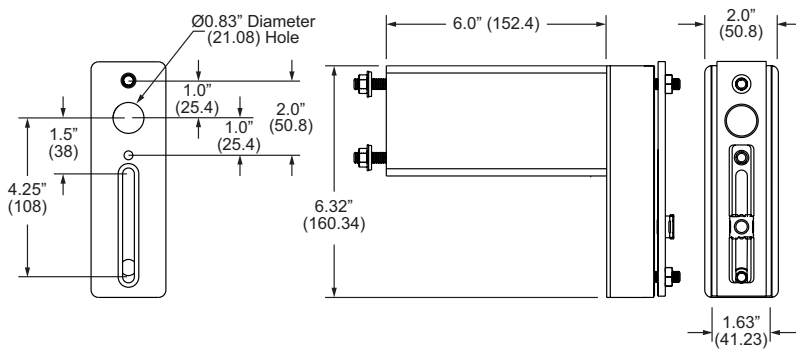
Standard Pole Arm Mount Details (PA)



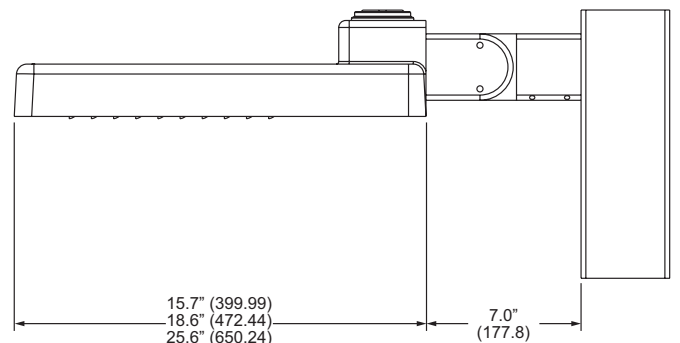
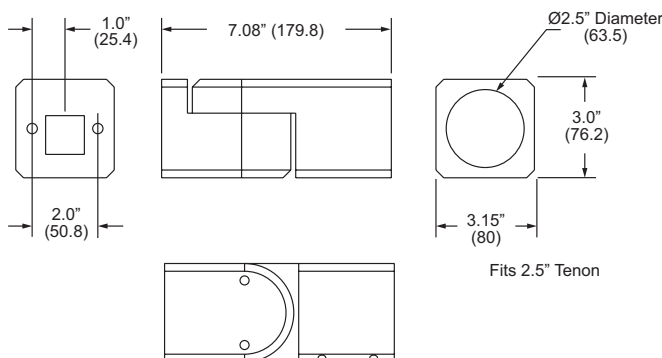
Pole Drilling Details



Universal Arm Mount Details (UM)



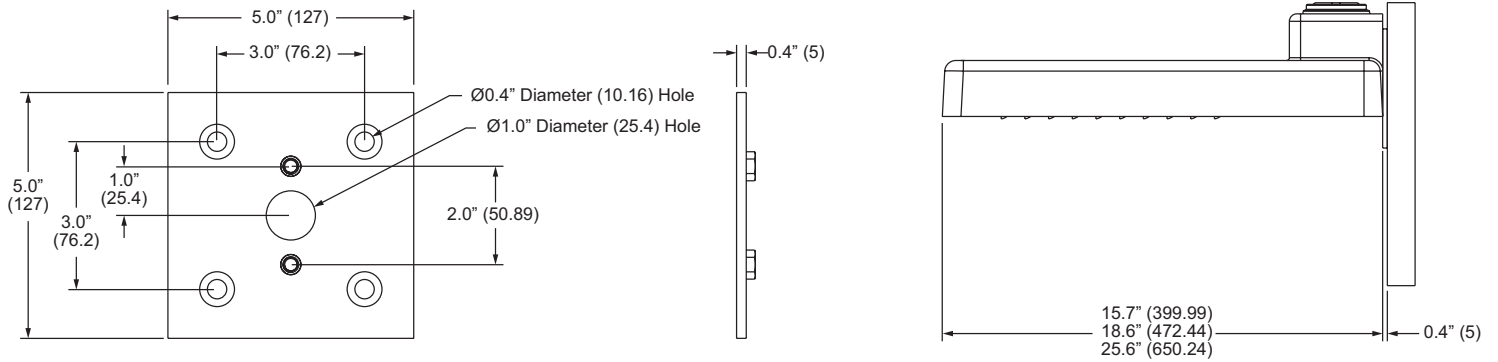
Slipfitter Knuckle Mount Details (SK)



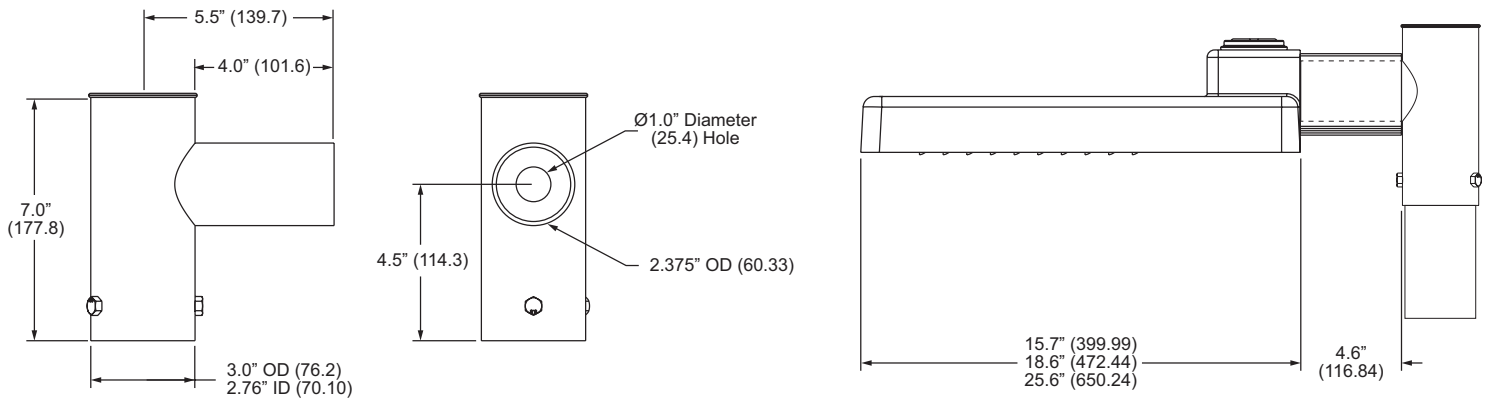
The information in this document is subject to change without notice.

Altair Series Accessories

Wall Mount Details (WM) May be used in conjunction with Standard Arm Mount (PA) Sold Separately



Tenon Adapter (TN) Shown used in conjunction with Mast Arm Mount (MA) Sold Separately



The information in this document is subject to change without notice.