

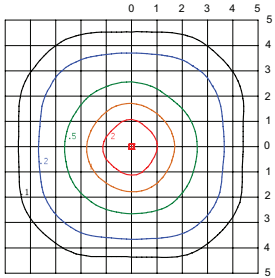
Altair Series Distributions

Photometry

Lumen values are from photometric tests performed in accordance with IESNA LM-79-08. Data is considered to be representative of the configuration shown. Actual performance may differ as a result of end user environment and application. To obtain an IES file specific to your project contact sales@eluminaire.com.

TYPE V SQUARE

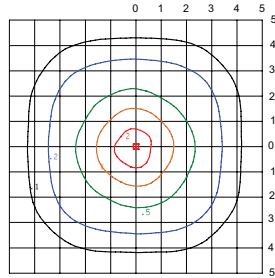
30-ft pole w/ single ALQ-5MQ-38-300



GRID LINES = UNITS OF MOUNTING HEIGHT

- 40-ft pole: Each grid line is 40-ft
- 30-ft pole: Each grid line is 30-ft
- 20-ft pole: Each grid line is 20-ft
- 40-ft pole = .75-fc multiplier
- 30-ft pole = 1.0-fc multiplier
- 20-ft pole = 1.5-fc multiplier

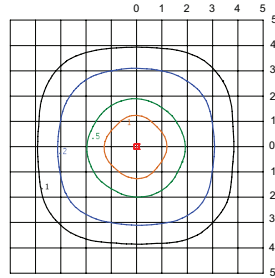
30-ft pole w/ single ALQ-5MQ-30-225



GRID LINES = UNITS OF MOUNTING HEIGHT

- 40-ft pole: Each grid line is 40-ft
- 30-ft pole: Each grid line is 30-ft
- 20-ft pole: Each grid line is 20-ft
- 40-ft pole = .75-fc multiplier
- 30-ft pole = 1.0-fc multiplier
- 20-ft pole = 1.5-fc multiplier

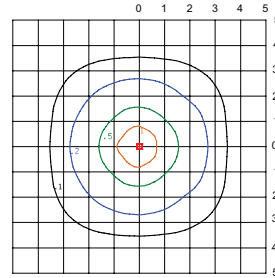
30-ft pole w/ single ALQ-5MQ-22-160



GRID LINES = UNITS OF MOUNTING HEIGHT

- 40-ft pole: Each grid line is 40-ft
- 30-ft pole: Each grid line is 30-ft
- 20-ft pole: Each grid line is 20-ft
- 40-ft pole = .75-fc multiplier
- 30-ft pole = 1.0-fc multiplier
- 20-ft pole = 1.5-fc multiplier

30-ft pole w/ single ALQ-5MQ-16-110

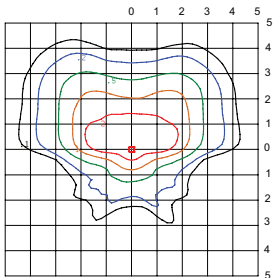


GRID LINES = UNITS OF MOUNTING HEIGHT

- 40-ft pole: Each grid line is 40-ft
- 30-ft pole: Each grid line is 30-ft
- 20-ft pole: Each grid line is 20-ft
- 40-ft pole = .75-fc multiplier
- 30-ft pole = 1.0-fc multiplier
- 20-ft pole = 1.5-fc multiplier

TYPE IV

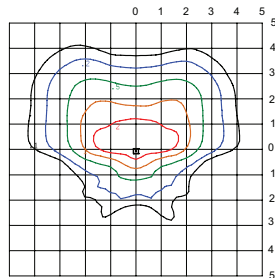
30-ft pole w/ single ALQ-4M-38-300



GRID LINES = UNITS OF MOUNTING HEIGHT

- 40-ft pole: Each grid line is 40-ft
- 30-ft pole: Each grid line is 30-ft
- 20-ft pole: Each grid line is 20-ft
- 40-ft pole = .75-fc multiplier
- 30-ft pole = 1.0-fc multiplier
- 20-ft pole = 1.5-fc multiplier

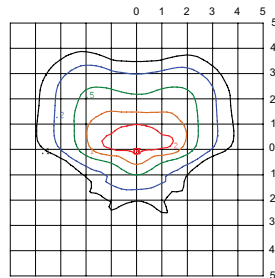
30-ft pole w/ single ALQ-4M-30-225



GRID LINES = UNITS OF MOUNTING HEIGHT

- 40-ft pole: Each grid line is 40-ft
- 30-ft pole: Each grid line is 30-ft
- 20-ft pole: Each grid line is 20-ft
- 40-ft pole = .75-fc multiplier
- 30-ft pole = 1.0-fc multiplier
- 20-ft pole = 1.5-fc multiplier

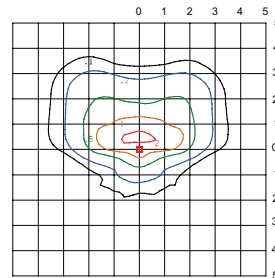
30-ft pole w/ single ALQ-4M-22-160



GRID LINES = UNITS OF MOUNTING HEIGHT

- 40-ft pole: Each grid line is 40-ft
- 30-ft pole: Each grid line is 30-ft
- 20-ft pole: Each grid line is 20-ft
- 40-ft pole = .75-fc multiplier
- 30-ft pole = 1.0-fc multiplier
- 20-ft pole = 1.5-fc multiplier

30-ft pole w/ single ALQ-4M-16-110

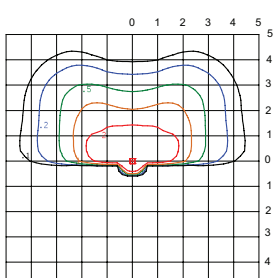


GRID LINES = UNITS OF MOUNTING HEIGHT

- 40-ft pole: Each grid line is 40-ft
- 30-ft pole: Each grid line is 30-ft
- 20-ft pole: Each grid line is 20-ft
- 40-ft pole = .75-fc multiplier
- 30-ft pole = 1.0-fc multiplier
- 20-ft pole = 1.5-fc multiplier

TYPE IV, House Side Shield

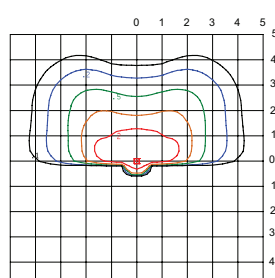
30-ft pole w/ single ALQ-4M-HSS-38-300



GRID LINES = UNITS OF MOUNTING HEIGHT

- 40-ft pole: Each grid line is 40-ft
- 30-ft pole: Each grid line is 30-ft
- 20-ft pole: Each grid line is 20-ft
- 40-ft pole = .75-fc multiplier
- 30-ft pole = 1.0-fc multiplier
- 20-ft pole = 1.5-fc multiplier

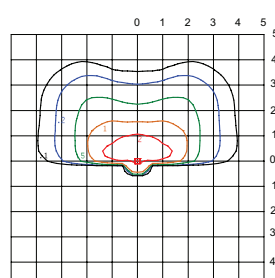
30-ft pole w/ single ALQ-4M-HSS-30-225



GRID LINES = UNITS OF MOUNTING HEIGHT

- 40-ft pole: Each grid line is 40-ft
- 30-ft pole: Each grid line is 30-ft
- 20-ft pole: Each grid line is 20-ft
- 40-ft pole = .75-fc multiplier
- 30-ft pole = 1.0-fc multiplier
- 20-ft pole = 1.5-fc multiplier

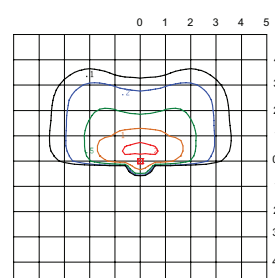
30-ft pole w/ single ALQ-4M-HSS-22-160



GRID LINES = UNITS OF MOUNTING HEIGHT

- 40-ft pole: Each grid line is 40-ft
- 30-ft pole: Each grid line is 30-ft
- 20-ft pole: Each grid line is 20-ft
- 40-ft pole = .75-fc multiplier
- 30-ft pole = 1.0-fc multiplier
- 20-ft pole = 1.5-fc multiplier

30-ft pole w/ single ALQ-4M-HSS-16-110



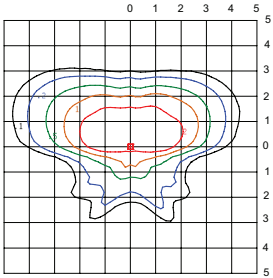
GRID LINES = UNITS OF MOUNTING HEIGHT

- 40-ft pole: Each grid line is 40-ft
- 30-ft pole: Each grid line is 30-ft
- 20-ft pole: Each grid line is 20-ft
- 40-ft pole = .75-fc multiplier
- 30-ft pole = 1.0-fc multiplier
- 20-ft pole = 1.5-fc multiplier

The information in this document is subject to change without notice.

TYPE III

30-ft pole w/ single ALQ-3M-38-300



GRID LINES = UNITS OF MOUNTING HEIGHT

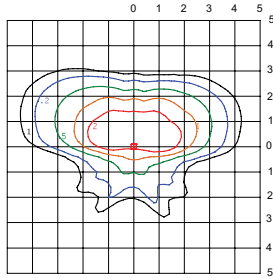
40-ft pole: Each grid line is 40-ft
 30-ft pole: Each grid line is 30-ft
 20-ft pole: Each grid line is 20-ft

40-ft pole = .75-fc multiplier

30-ft pole = 1.0-fc multiplier

20-ft pole = 1.5-fc multiplier

30-ft pole w/ single ALQ-3M-30-225



GRID LINES = UNITS OF MOUNTING HEIGHT

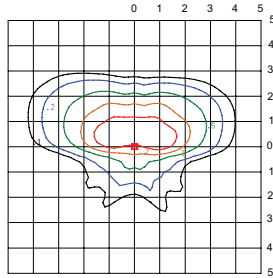
40-ft pole: Each grid line is 40-ft
 30-ft pole: Each grid line is 30-ft
 20-ft pole: Each grid line is 20-ft

40-ft pole = .75-fc multiplier

30-ft pole = 1.0-fc multiplier

20-ft pole = 1.5-fc multiplier

30-ft pole w/ single ALQ-3M-22-160



GRID LINES = UNITS OF MOUNTING HEIGHT

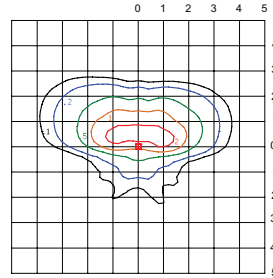
40-ft pole: Each grid line is 40-ft
 30-ft pole: Each grid line is 30-ft
 20-ft pole: Each grid line is 20-ft

40-ft pole = .75-fc multiplier

30-ft pole = 1.0-fc multiplier

20-ft pole = 1.5-fc multiplier

30-ft pole w/ single ALQ-3M-16-110



GRID LINES = UNITS OF MOUNTING HEIGHT

40-ft pole: Each grid line is 40-ft
 30-ft pole: Each grid line is 30-ft
 20-ft pole: Each grid line is 20-ft

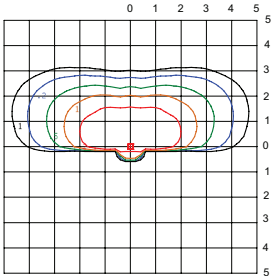
40-ft pole = .75-fc multiplier

30-ft pole = 1.0-fc multiplier

20-ft pole = 1.5-fc multiplier

TYPE III, House Side Shield

30-ft pole w/ single ALQ-3M-HSS-38-300



GRID LINES = UNITS OF MOUNTING HEIGHT

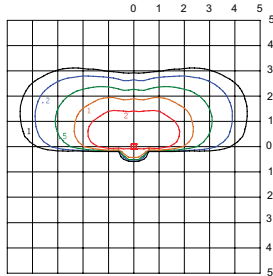
40-ft pole: Each grid line is 40-ft
 30-ft pole: Each grid line is 30-ft
 20-ft pole: Each grid line is 20-ft

40-ft pole = .75-fc multiplier

30-ft pole = 1.0-fc multiplier

20-ft pole = 1.5-fc multiplier

30-ft pole w/ single ALQ-3M-HSS-30-225



GRID LINES = UNITS OF MOUNTING HEIGHT

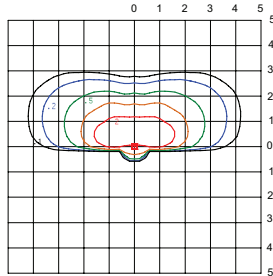
40-ft pole: Each grid line is 40-ft
 30-ft pole: Each grid line is 30-ft
 20-ft pole: Each grid line is 20-ft

40-ft pole = .75-fc multiplier

30-ft pole = 1.0-fc multiplier

20-ft pole = 1.5-fc multiplier

30-ft pole w/ single ALQ-3M-HSS-22-160



GRID LINES = UNITS OF MOUNTING HEIGHT

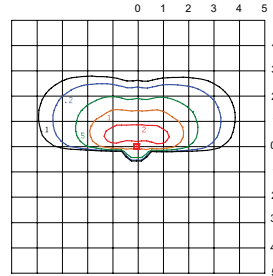
40-ft pole: Each grid line is 40-ft
 30-ft pole: Each grid line is 30-ft
 20-ft pole: Each grid line is 20-ft

40-ft pole = .75-fc multiplier

30-ft pole = 1.0-fc multiplier

20-ft pole = 1.5-fc multiplier

30-ft pole w/ single ALQ-3M-HSS-16-110



GRID LINES = UNITS OF MOUNTING HEIGHT

40-ft pole: Each grid line is 40-ft
 30-ft pole: Each grid line is 30-ft
 20-ft pole: Each grid line is 20-ft

40-ft pole = .75-fc multiplier

30-ft pole = 1.0-fc multiplier

20-ft pole = 1.5-fc multiplier