

Altair Series

LED Area Luminaire Series with Revolutionary eQuantum Optical System

Product Description

The Altair Series LED area luminaire features traditional 'shoebox' luminaire look with a sleek architectural profile. The fixture is modestly smaller than traditional 'shoe boxes' for easier handling and installations, yet retains the classic look. The Altair Series utilizes state of the art LEDs combined with advanced eQuantum optics for precise control and energy-efficiency of 118-124 lumens per watt.

Typical applications include: Street and area lighting, parking lots/garages, site lighting, parks, industrial, retail and sports lighting.

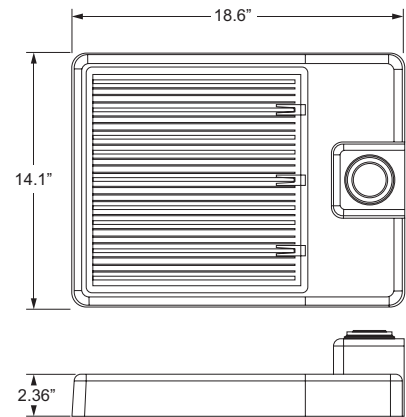
Product Performance

- Wattage Range: 114W-341W
- Input Voltage: 120-277V, 277-480V
- 20kV standard
- CCT: 3000K, 4000K and 5000K (2700K-5700K*)
- CRI: 70, 80 and 90* CRI
- UL1598 Compliant
- Driver mounted quick change component door with retaining cable
- Optional universal pole mounting kit available
- 0-10V dimmable power supply
- 5 year warranty (materials and workmanship)

Accessories

- Universal Mount
- 6" Arm Mount for Square Poles
- 6" Arm Mount for Round Poles
- Wall Mount
- Slipfitter
- Round Mast Mount Kit

* Consult Factory



EPA: 0.5

Weight: 15.0 lb

Example: ALQ-5MQ24040K7MVOLT-WH

ALQ	-XX	XX	AMKX	XX	-XX
Series	Distribution	Target Lumens ¹	CCT Code	Voltage	Fixture Color
ALQ	3MR - Type 3	120 - 14,000 lumens, 113W	30K8 - 3000K, 80 CRI	MVOLT - 120-277V	WH - White
	4MR - Type 4	240 - 32,000 lumens, 267W	40K7 - 4000K, 70 CRI	HV - HTRD 277-480V	SV - Silver
	5MQ - Type 5, Square	350 - 40,000 lumens, 341W	40K8 - 4000K, 80CRI		BL - Black
			50K7 - 5000K, 70CRI		BZ - Bronze
			50K8 - 5000K, 80CRI		

Accessory Guide (Field installed, order as separate line item)

Accessory Number ²	Description	Accessory Number ¹	Description
ALS-UM01XX	Universal Pole Mounting Kit	ALS-AE06FX	6" Arm Extension Kit for Square Pole
ALS-WM01XX	Wall Mount Kit	ALS-AE06R4XX	6" Arm Extension Kit for 4" Round Pole
ALS-RM01XX	Round Mast Mount Kit	ALS-AE06R5XX	6" Arm Extension Kit for 5" Round Pole
ALS-SF01XX	Slipfitter Mount	ALS-AE06R6XX	6" Arm Extension Kit for 6" Round Pole

¹ See performance chart on page 2 for specific lumen values

² XX = WH, SV, BL or BZ



Altair Series

Product Specifications

Construction & Materials

- Powder coated aluminum housing
- PMMA (Polymethyl methacrylate) high durability, non-discoloring lens
- Robust low profile design
- Multi stage pre-treatment and high-durability TGIC powder coat finish, optional anodized pre-treatment marine finish

Optical System

- Type III, IV, and V square

Electrical System

- Input Voltage: 120-277VAC, 277-480VAC
- Power Factor: > 0.9
- Total Harmonic Distortion: <20%
- Operating Temperature Range: -40°C to 60°C

Testing & Certifications

- cETLus Listed
- UL1598, CSA STD.22.2 compliant
- 3G Vibration Rating
- Suitable for Wet Locations
- RoHS Compliant
- Can meet ARRA Buy America requirements as required

Lumen Maintenance

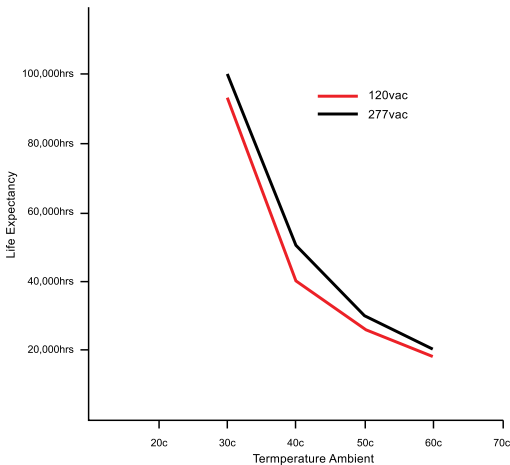
L70@ 25°C >100,000 hours

Photometry

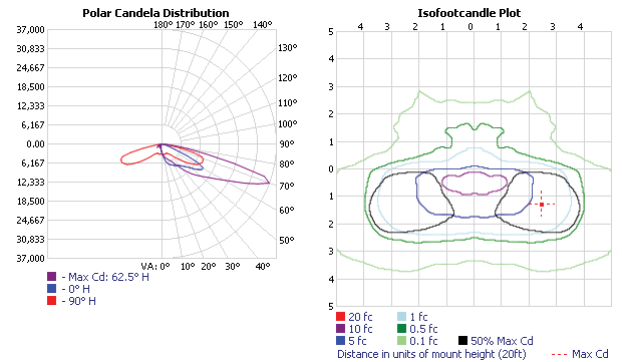
All published photometric testing data is performed to IESNA LM79-08 standards by a NVLAP accredited laboratory. To obtain an IES file specific to your project contact sales@eluminaire.com.

Thermal De-Rating Curve

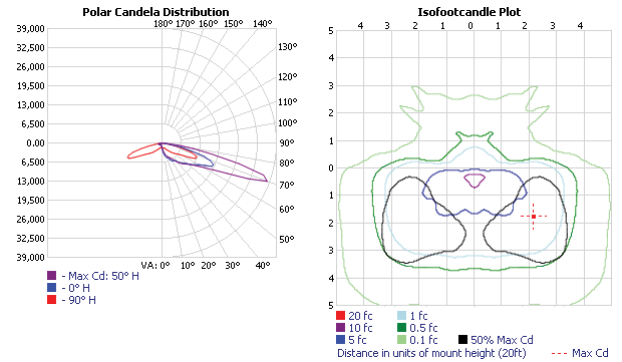
Life expectancy vs ambient temperature



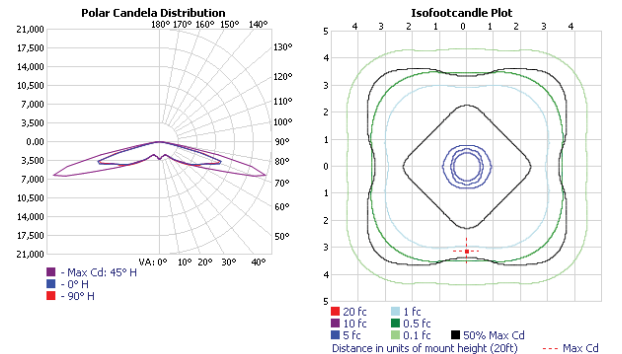
TYPE III



TYPE IV



TYPE V SQUARE



eLuminaire maintains a tolerance of +/- 7% on flux and power measurements. The information in this document is subject to change without notice.

Altair Series Accessories

Accessory Guide (Field installed, order as separate line item)

Accessory Number ¹	Description	Accessory Number ¹	Description
ALS-UM01XX	Universal Pole Mounting Kit	ALS-AE06FXX	6" Arm Extension Kit for Square Pole
ALS-WM01XX	Wall Mount Kit	ALS-AE06R4XX	6" Arm Extension Kit for 4" Round Pole
ALS-RM01XX	Round Mast Mount Kit	ALS-AE06R5XX	6" Arm Extension Kit for 5" Round Pole
ALS-SF01XX	Slipfitter Mount	ALS-AE06R6XX	6" Arm Extension Kit for 6" Round Pole

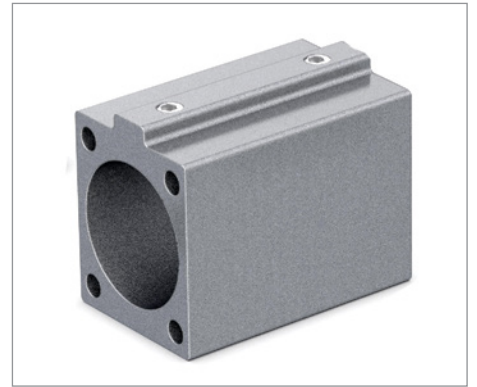
¹ XX = WH, SV, BL or BZ



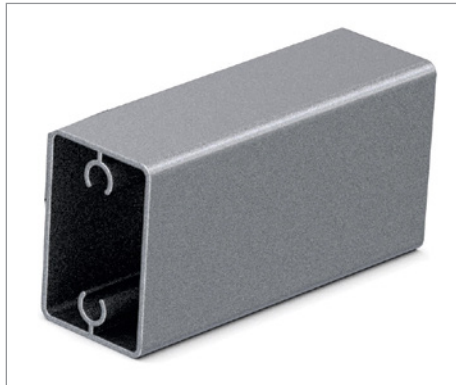
ALS-UM01XX - Universal Mounting Kit



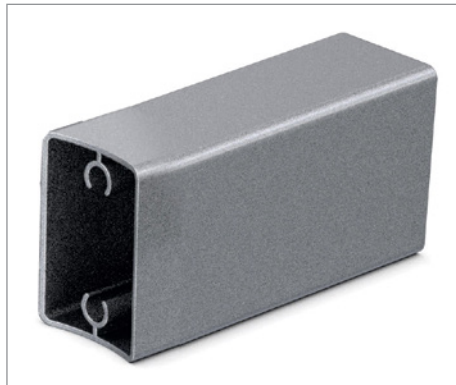
ALS-WM01XX - Wall Mount Kit



ALS-RM01XX - Round Mast Mount Kit



ALS-AE06FXX - 6" Arm Extension Kit for Square Pole



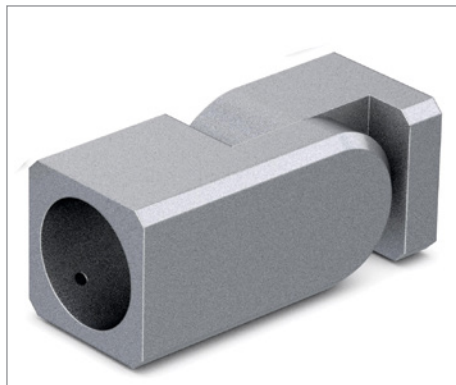
ALS-AE06R4XX - 6" Arm Extension Kit for 4" Round Pole



ALS-AE06R5XX - 6" Arm Extension Kit for 5" Round Pole



ALS-AE06R6XX - 6" Arm Extension Kit for 6" Round Pole



ALS-SF01XX - Slipfitter Mount Accessories