

HMS2 Series

High Mast LED Area Luminaire Series 2

Product Description

The HMS2 Series LED high mast luminaire features a low profile, sleek architectural design. Durable and reliable, and producing up to 61,000 lumens, the HMS2 is ideal for the tall mounting heights found in dockyards, roadway and port applications. The HMS2 Series utilizes state of the art Cree LEDs combined with in-house optics for the precise control and superb light quality.

Applications: Industrial, Warehouse Sites, Dockyards, Ports, Roadways, Parking Lots.

Product Performance

- Wattage: 334 or 476W
- Input Voltage: 277-480V
- CCT: 3000K - 5000K
- CRI: 70-90 CRI
- UL1598 Compliant
- Safety cable on driver compartment door standard
- Drivers and surge protection are easily accessible and feature quick connects for rapid replacement
- 0-10V dimmable power supply
- 5 year warranty

Available Accessories (See page 3 for details)

- Trunnion Mount
- Round Mast Mount Kit
- House Side Shield



Ordering Guide

Example: HMS2-5WR44050K7UH-WH

HMS2- Series	XX Distribution	XXX Approximate Lumens*	XXXX CCT Code	XX Voltage	-XX Fixture color	-HSS Options (Factory Installed)
eLHMS1	2MR - Type 2 3MR - Type 3 4MR - Type 4 5MQ - Type 5, Square 5WR - Type 5, Round	440 - 44,188 lumens, 334W 610 - 61,030 lumens, 476W	30K8 - 3000K, 80 CRI 40K7 - 4000K, 70 CRI 40K8 - 4000K, 80CRI 50K7 - 5000K, 70CRI 50K8 - 5000K, 80CRI AMKX - Amber, Special Order	UH - 277-480V	WH - White SV - Silver BL - Black BZ - Bronze	HSS - House Side Shield

* Use ies files for actual lumen values for specific CCT and CRI configurations.

Accessory Guide (Field installed, order as separate line item)

Accessory Number*	Description
HMS-HSS	House Side Shield
HMS-RM01XX	Round Mast Mount Kit
HMS-TK01XX	Trunnion Mount Kit (only available for single head, 238W units)

* XX = WH, SV, BL or BZ



HMS2 Series

Product Specifications

Construction & Materials

- Powder coated aluminum housing
- UV Stabilized single polycarbonate lens
- Robust low profile design with active thermal management

Optical System

- Type II, III, IV, V round, V square

Electrical System

- Input Voltage: 277-480VAC
- Power Factor: > 0.9
- Total Harmonic Distortion: <20%
- Operating Temperature Range: -40°C to 60°C

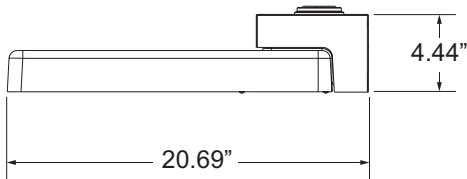
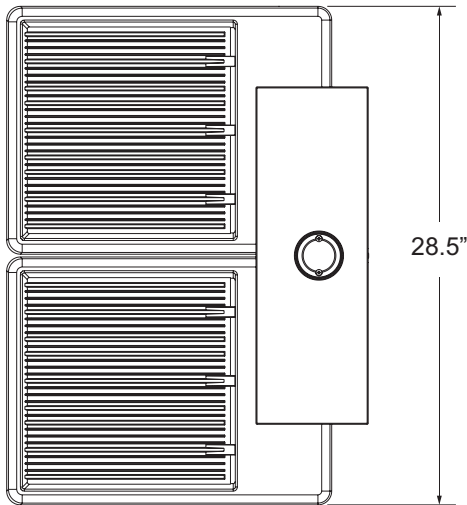
Testing & Certifications

- cETLus Listed
- UL1598, CSA STD.22.2 compliant
- Suitable for Wet Locations
- RoHS Compliant
- Can meet ARRA Buy America requirements as required

Lumen Maintenance

- L90@ 25C >190,000 hours

Dimensions



EPA: 0.90

Fixture Weight: 44lbs

eLuminaire maintains a tolerance of +/- 7% on flux and power measurements. The information in this document is subject to change without notice.

HMS2 Series Accessories

High Mast LED Area Luminaire Series 2

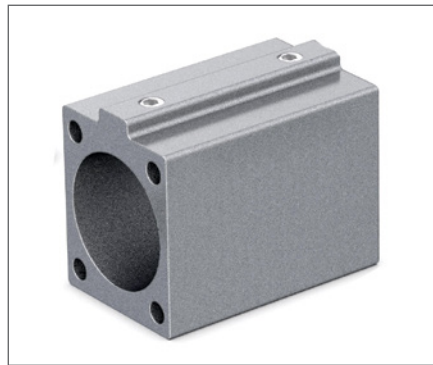
Accessory Guide (Field installed, order as separate line item)

Accessory Number*	Description
HMS-HSS	House Side Shield
HMS-RM01XX	Round Mast Mount Kit
HMS-TK01XX	Trunnion Mount Kit (only available for single head, 238W units)

* XX = WH, SV, BL or BZ



HSS - House Side Shield



HMS-RM01XX - Round Mast Mount Kit



HMS-TK01XX - Trunnion Mount Kit

eLuminaire maintains a tolerance of +/- 7% on flux and power measurements. The information in this document is subject to change without notice.