



CANOPY

 **eLuminaire™**

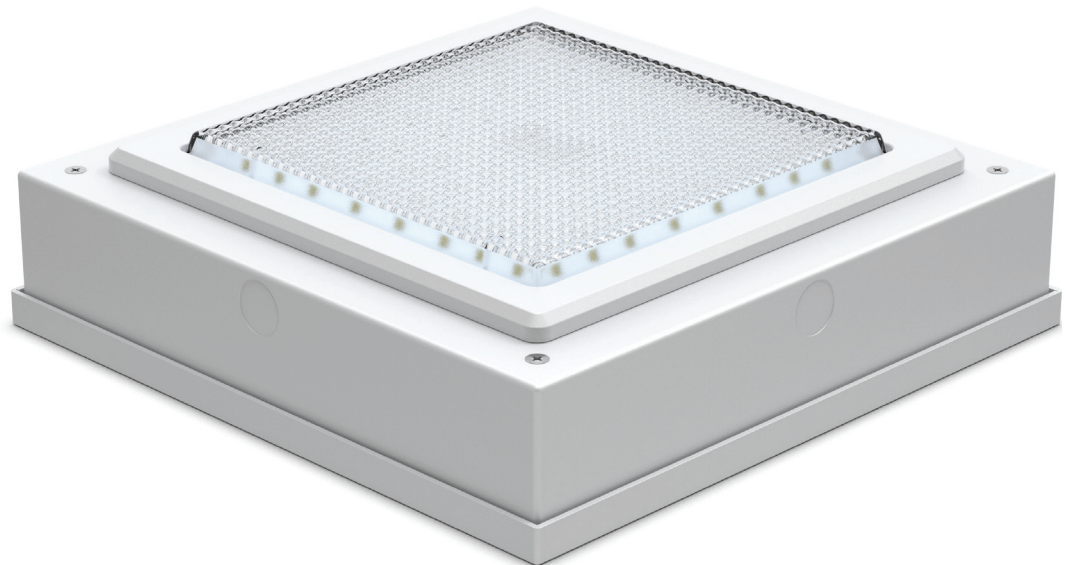
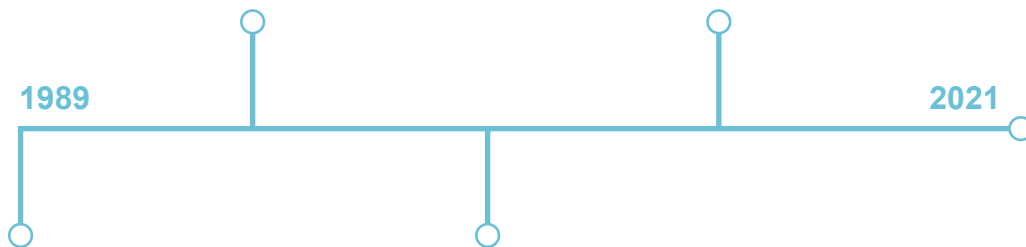
Table of Contents

About Us.....	3
Applications	6
Features.....	6
Customize	6
Quality Control.....	6
Rapid Custom Engineering Solutions	7
Materials/Construction.....	8-9
Superior Design Exploded View	10-11
Product Selection Guide	12
Options & Accessories	13
GALAXY Performance Summary	14
CENTAUR Performance Summary	15
ATLAS Performance Summary	16
Easy Installation	17



30 Years ago we stepped into the world of LEDs.

eLuminaire is driven to deliver the best performing LED fixtures on the market, decades of experience ensures the highest quality products in the industry. Backed by a long history of innovation, multiple patents, in-house design, engineering, testing and manufacturing you will not find better value elsewhere. A culture of customer service along with an experienced sales and management team has been a stepping stone to our current success. We pride ourselves on the use of ultra-efficient optics, reliable internal sub-systems, 100% operational testing on all products and speed-to-market for both standard and customized products, while maintaining very competitive pricing.



Excel
is in the detail

High performance
great price + quality
eLumina

1
len
ce
s...

ormance +
quality =

ireTM

Applications

- Soffits, Low-Mid bays, Walk ways, Industrial rooms, Prisons

Features

- Up to 157 LPW on standard product
- Patented Low profile design (USD702868)
- Pendant and J-Box mount standard
- Pretreated ECLPS aluminum housing
- Foam in place manufacturing technology
- Polycarbonate/PMMA plastics
- TGIC powder coat
- Aluminum PCB
- Mid Power LEDs
- Ultra low drive current circuit design
- Dimmable drivers
- Independent LEDs for emergency use

Customize

- 120-277V or 277-480V
- CCT 3000K, 4000k or 5000k, minimum 80 CRI (Amber available)
- 10kV surge protection
- 8W Built in 90 minute battery backup available on some models
- PIR occupancy sensor
- Wireless controls

Quality Control

- 3 points production testing in our own ISO9000 facility
- Windchill managed design and production
- 1 hour burn test before anything is shipped
- All units serialized with unique ID for traceability
- All units test data logged and archived

We design with high quality materials and lean manufacturing processes from the start.

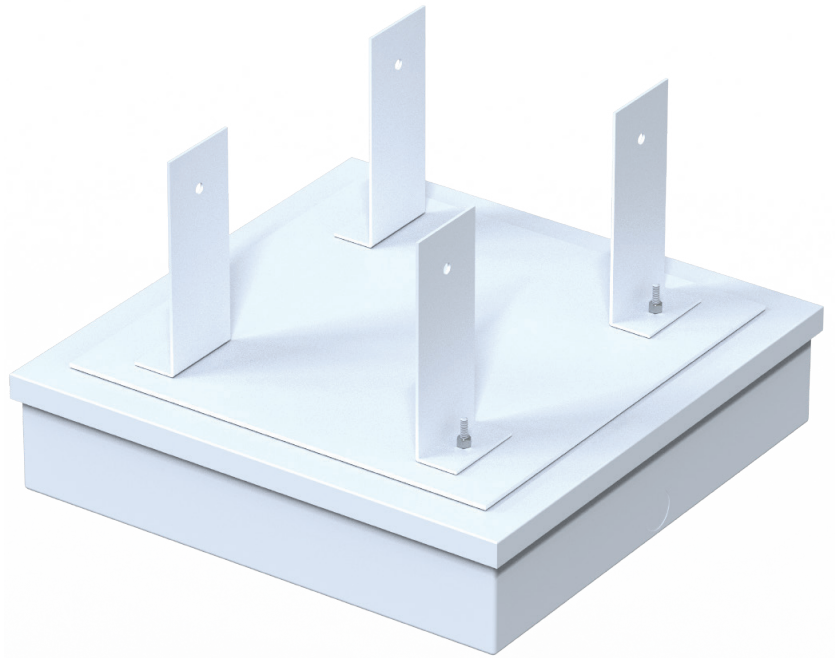
The results speak for themselves, now up to 157 LPW. Exceeding DLC premium requirements by 30% and now going on 8 years in production with over 500,000 units shipped! Designed and engineered in the US and manufactured in our own ISO9000 certified facility. We are your solutions provider for those projects demanding on time delivery and 100% working product.

Rapid Custom Engineering Solutions

Need a customized solution for your project? **No Problem.**

We are the designers and the manufacturer. Send us your request and we will take it from there.

Quickship Available 



Shown, Lafayette airport custom mounting solution.

Materials/Construction

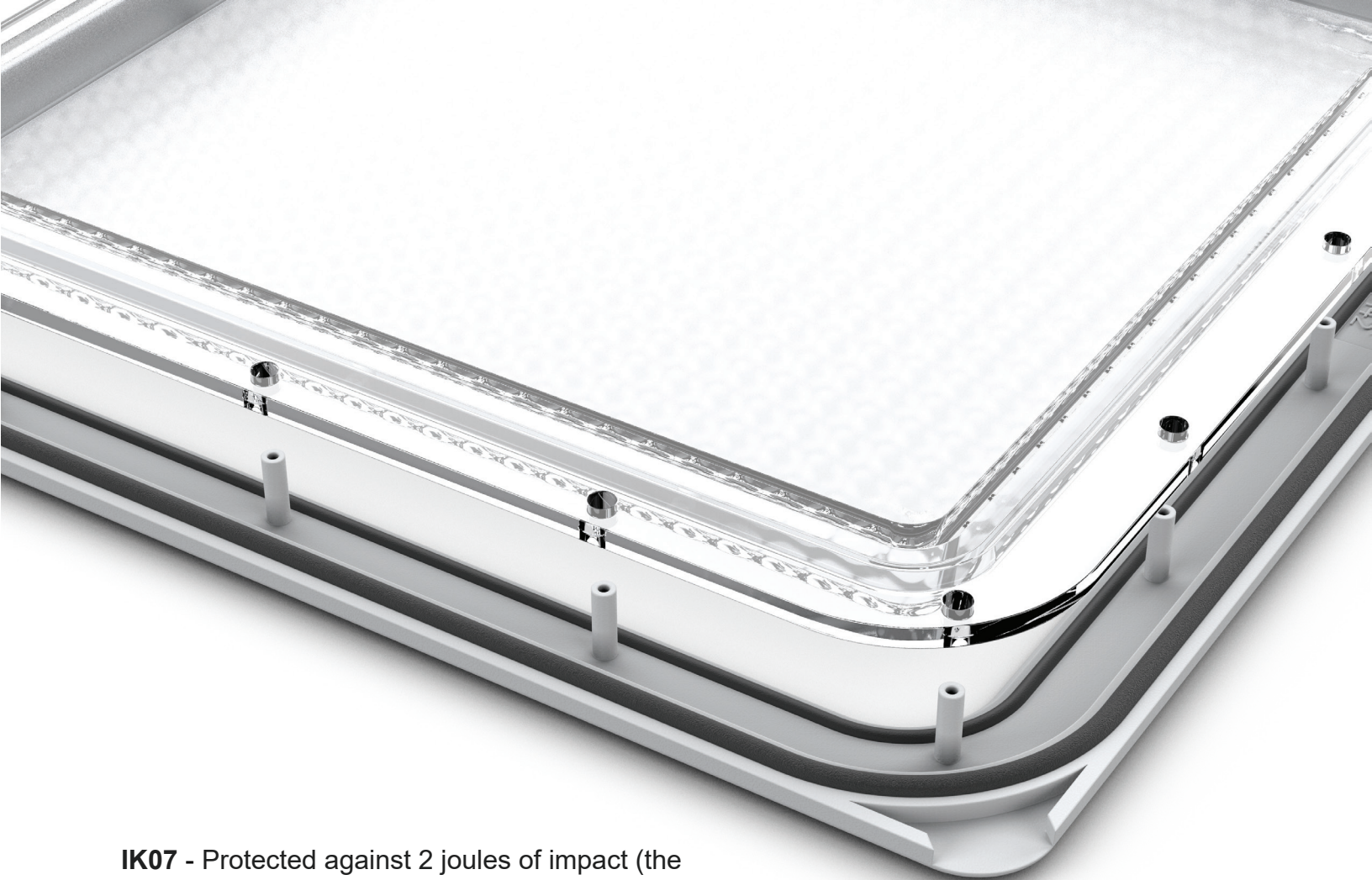
- Sheet Metal - AL1060
- 316 Stainless steel fasteners, Marine grade
- Salt spray

FIP - Foam in Place - Foam in place creates a strong durable seal, the precise seal prevents ingress of moisture reliability

German made RAKU-PUR® Materials

eLuminaire eCote and SeaGard finishing. Harsh conditions for lighting fixtures can be as common as industrial plants applications, parking garages with fumes and residue from automobile fuel, to marine and aviation environments.





IK07 - Protected against 2 joules of impact (the equivalent to the impact of a 0.5kg mass dropped from 400mm above the impacted surface)



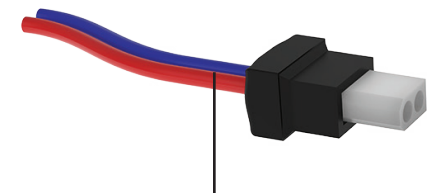
Superior Design

Thermal quality, corrosion resistant, and efficient Sheet Metal - AL1060

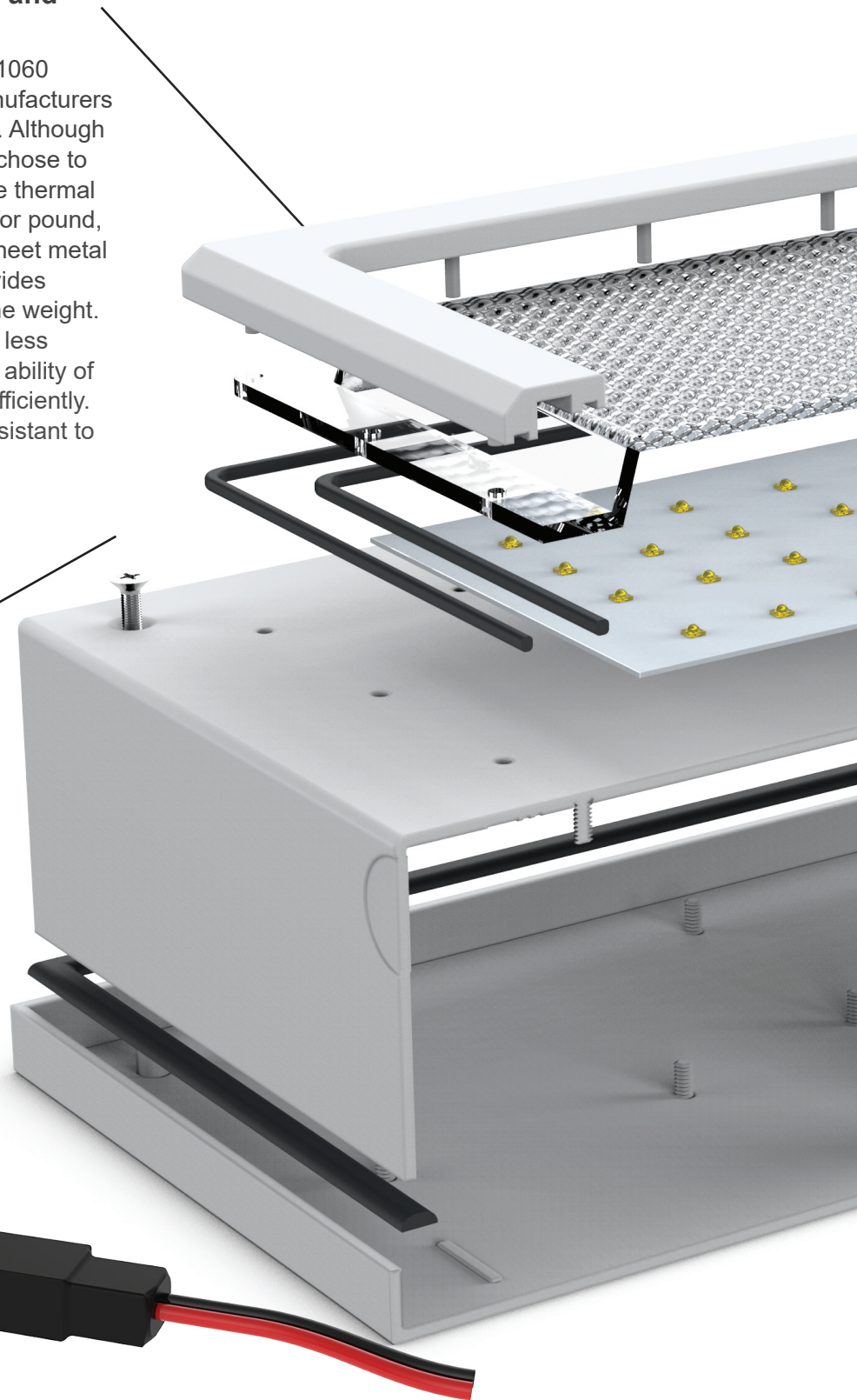
Our canopy products are produced from AL 1060 sheet metal. We are one of the very few manufacturers who use aluminum sheet metal for housings. Although aluminum die-casting would be cheaper we chose to stay with aluminum sheet metal for its unique thermal properties and corrosion resistance. Pound for pound, no die-cast alloy will outperform aluminum sheet metal thermally. Aluminum sheet metal simply provides better thermal conductivity for a fraction of the weight. Aluminum sheet metal also has a flatness of less than 10 microns. This flatness enhances the ability of our LED light engines to transfer heat very efficiently. With only 0.05% copper AL 1060 is highly resistant to corrosion.

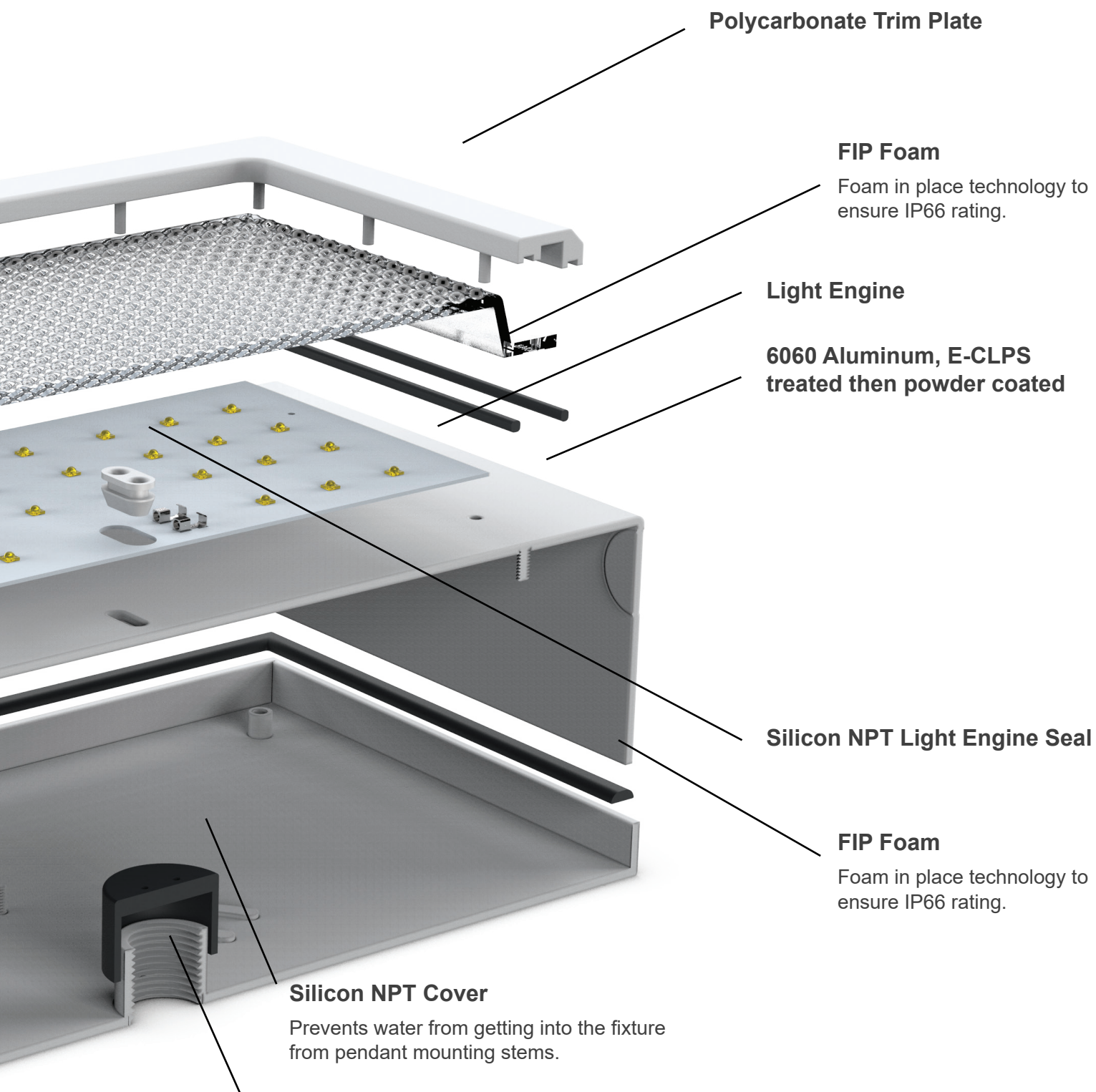
Fasteners

Marine grade 316 stainless steel fasteners.



Water Proof Light Engine Cable

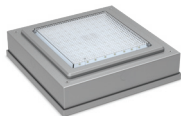

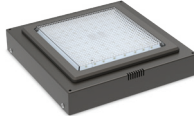




Foam In Place Gasket Technology

We use Foam In Place Gasket (FIPG) technology from manufacturing our fixtures. This manufacturing process allows us to easily achieve IP ratings that would otherwise require more components and additional manufacturing labor. FIPG technology is a costly automated system that eLuminaire saw as a clear advantage against the typical hand laid gaskets used by many competitors. The process involves dispensing German made RAKU-PUR® liquid onto our fixtures directly. This two part polyurethane system contains no solvents, plasticizers or halogenated hydrocarbons.

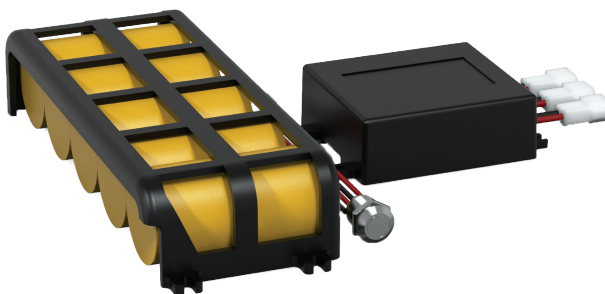
Product Selection Guide

	GALAXY DP	CENTAUR DP	ATLAS DP
Product Photo	 IP66 Rated Luminaire	 Pass Through Conduit Surface Mount	 Wet Location Low Profile
Product Performance			
Wattage Range	21W-53W	21W-53W	21W-53W
Input Voltage	120-277V or 277-480V	120-277V or 277-480V	120-277V or 277-480V
CCT	3000K, 4000K, 5000K, Amber	3000K, 4000K, 5000K, Amber	3000K, 4000K, 5000K, Amber
CRI	Minimum 80 CRI	Minimum 80 CRI	Minimum 80 CRI
Compliant	cETLus Listed UL1598, CSA STD 22.2 Compliant IP66 Rated Luminaire IK07 Impact Rated RoHS Compliant Can Meet ARRA as Required	cETLus Listed UL1598, CSA STD 22.2 Compliant Wet Location Listed IK07 Impact Rated RoHS Compliant Can Meet ARRA as Required	cETLus Listed UL1598, CSA STD 22.2 Compliant Wet Location Listed IK07 Impact Rated RoHS Compliant Can Meet ARRA as Required
Controls	Integral Wattstopper FSP211 Integral Wattstopper FSP221 External Wattstopper FSP221B	External Wattstopper FSP221B	External Wattstopper FSP221B
Dimmable Power Supply	0-10V Dimmable Power supply	0-10V Dimmable Power supply	0-10V Dimmable Power supply
Integral Battery Backup	Optional	N/A	N/A
Surge Suppression	10kV Surge Suppression Available	10kV Surge Suppression Available	10kV Surge Suppression Available
Customization	Customization Readily Available	Customization Readily Available	Customization Readily Available
Accessories (Field Installed)	Torx Screws, Bird Guard	Torx Screws, Bird Guard	Torx Screws, Bird Guard
Ordering	US Inventory	US Inventory	US Inventory
Warranty	5 Year	5 Year	5 Year
Construction & Materials			
Housing	6060 Aluminum	6060 Aluminum	6060 Aluminum
Finish	Pre treated High Performance TGIC Powder Coat	Pre treated High Performance TGIC Powder Coat	Pre treated High Performance TGIC Powder Coat
Tamper resistant	UV Stabilized single PMMA Lens	UV Stabilized single PMMA Lens	UV Stabilized single PMMA Lens
Mounting Options	Flush J-box mounting or Pendant mounting standard, Covered Canopy	Flush J-box mounting or Pendant mounting standard, Covered Canopy	Flush J-box mounting or Pendant mounting standard, Covered Canopy
Knock Out	One knock out	Four knock outs	One 1/2" conduit knock out
Installation	Easy, Hanging Loop	Easy, Hanging Loop	Easy, Hanging Loop
Dimensions without Controls	L12" x W12" x H2.43"	L12" x W12" x H2.71"	L12" x W12" x H2.71"
Dimensions with Controls	L12" x W15.65" x H3.11"		
Weight	7.5 to 8.0 lbs	6.0 to 7.0 lbs	6.0 to 7.0 lbs
Electrical System			
Operating Temperature Range	-40°C to 40°C	-40°C to 40°C	-40°C to 40°C
Testing Certifications			
Driver Compliance	FCC Part 15 Class B/EN55015, EN61000-3-2 Class C, EN61000-3-3		
Lumen Maintenance			
Lumen Maintenance	L70 @ 25°C >190,000 hours	L70 @ 25°C >190,000 hours	L70 @ 25°C >190,000 hours

Options & Accessories



Beauty Plates
Standard & Custom Sizes Available



Battery Backup,
8W, 90 minutes



10kA Surge Suppressor



PIR Wattstopper Sensor



Internal Synapse
Wireless Controller



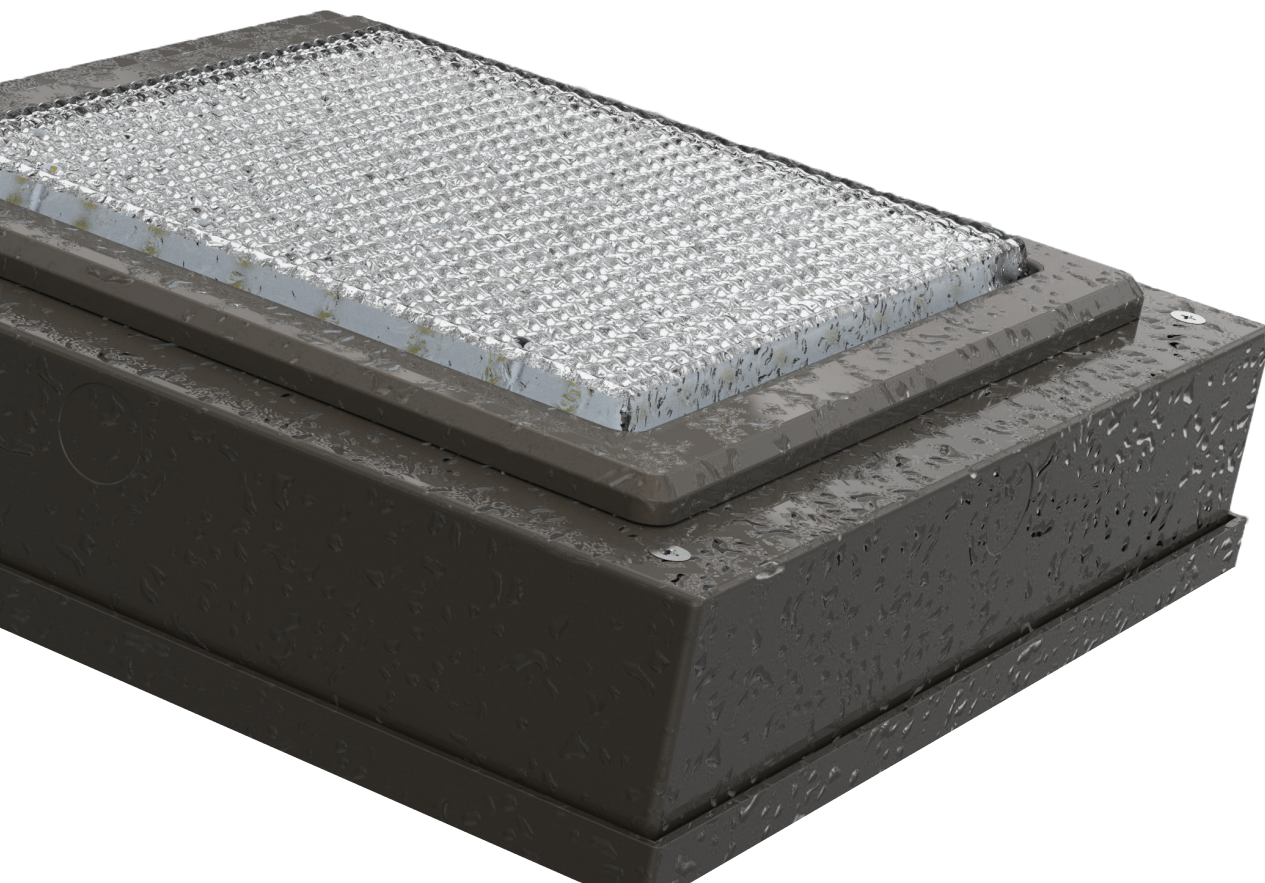
External Synapse
Wireless Controller

GALAXY DP

Low Glare, IP66 Rated Canopy

Performance Summary

Wattage Range	21W-53W
Input Voltage	120-277V or 277-480V
CCT	3000K, 4000K or 5000K
CRI	Minimum 80 CRI
Distributions	DP - Diffused Canopy
Surge Suppression	10kV Surge Suppression Available
Compliant	IP66 Rated Luminaire, UL1598 Compliant, IK07 Impact Certified
Controls	Wattstopper FSP211, FSP221, FSP221B
Dimming	0-10V Dimmable Power Supply
Warranty	5 year



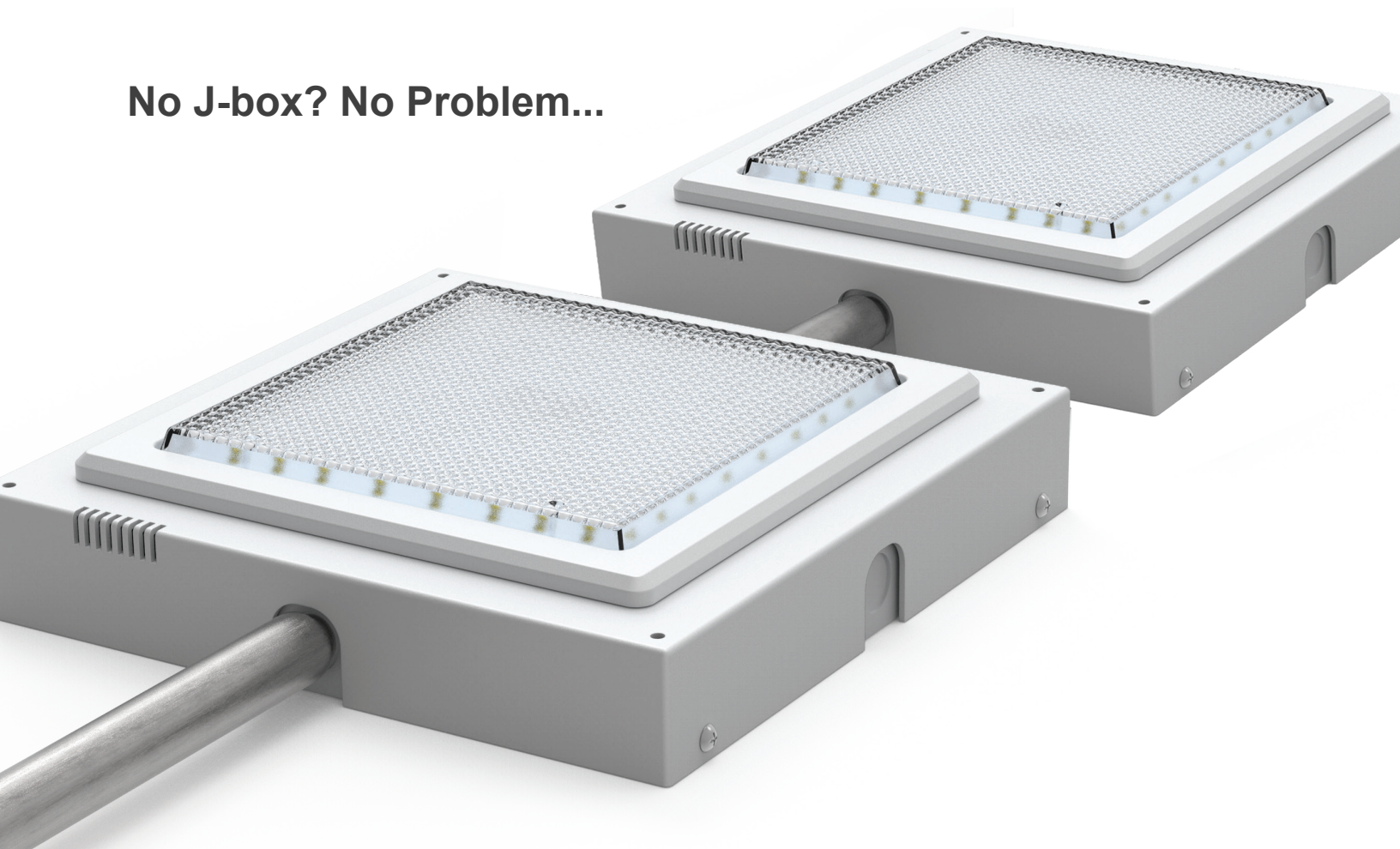
CENTAUR DP

Low Glare, Conduit Pass Thru Canopy

Performance Summary

Wattage Range	21W-53W
Input Voltage	120-277V or 277-480V
CCT	3000K, 4000K or 5000K
CRI	Minimum 80 CRI
Distributions	DP - Diffused Canopy
Surge Suppression	10kV Surge Suppression Available
Compliant	Wet Location Listed, UL1598 Compliant, IK07 Impact Certified
Controls	Wattstopper FSP221B
Dimming	0-10V Dimmable Power Supply
Warranty	5 year

No J-box? No Problem...

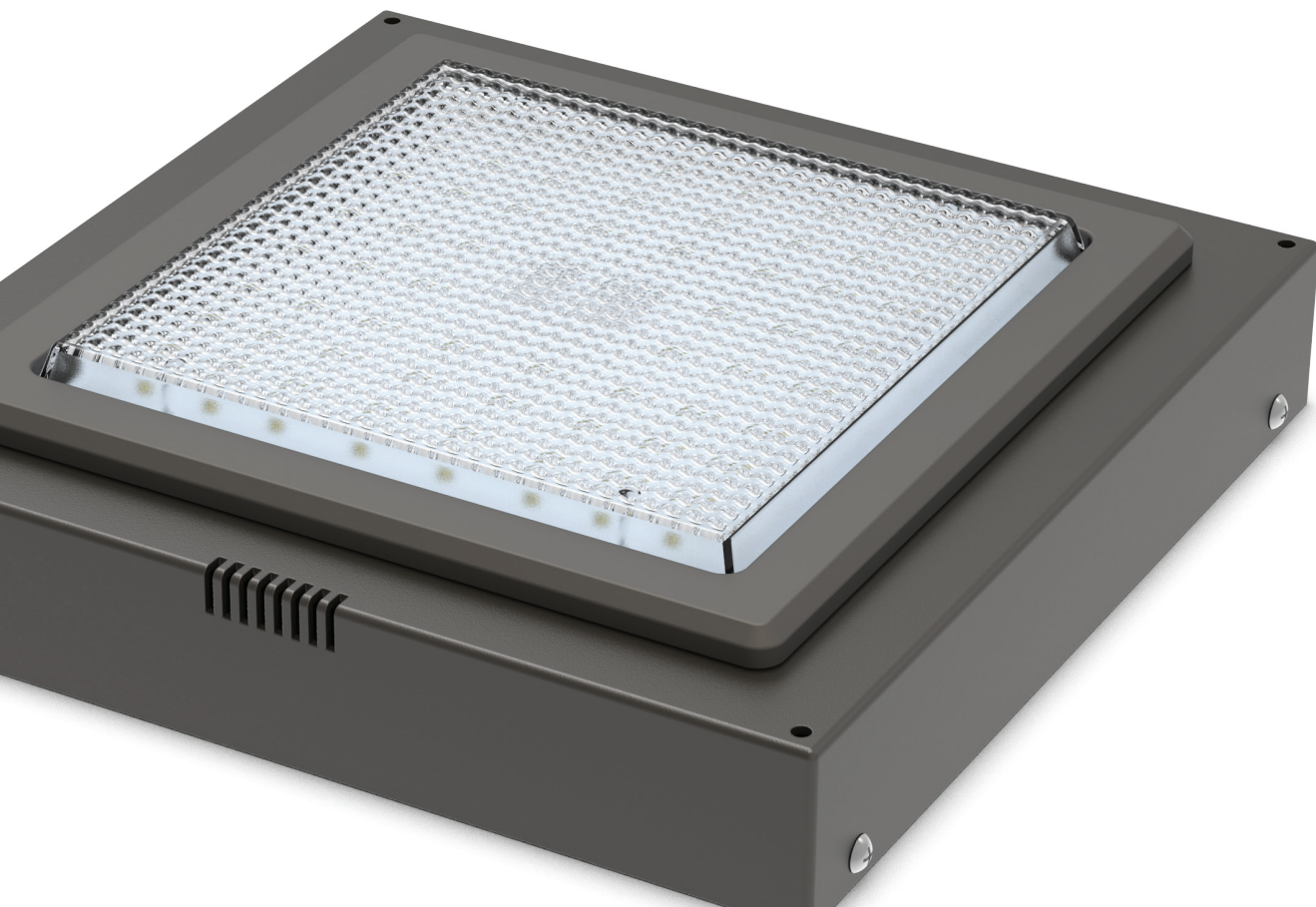


ATLAS DP

Low Glare, Low Profile Canopy

Performance Summary

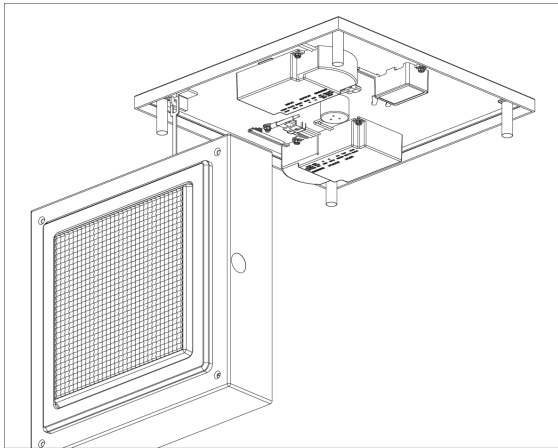
Wattage Range	21W-53W
Input Voltage	120-277V or 277-480V
CCT	3000K, 4000K or 5000K
CRI	Minimum 80 CRI
Distributions	DP - Diffused Canopy
Surge Suppression	10kV Surge Suppression Available
Compliant	Wet Location Listed, UL1598 Compliant, IK07 Impact Certified
Controls	Wattstopper FSP221B
Dimming	0-10V Dimmable Power Supply
Warranty	5 year



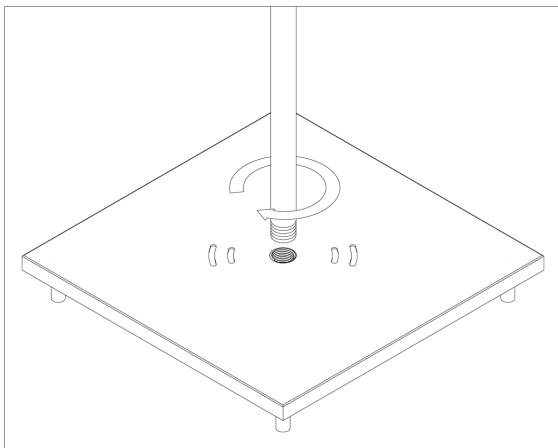
One size doesn't fit all...

Easy Installation

STEP 1



STEP 2



STEP 3

