

ALS1 Series

LED Area Luminaire Series 1

Product Description

The ALS1 Series LED area luminaire features traditional 'shoebox' luminaire look with a sleek architectural profile. The fixture is modestly smaller than traditional 'shoe boxes' for easier handling and installations, yet retains the classic look. The ALS1 Series utilizes state of the art LEDs for precise control and superb light quality.

Applications: Industrial, retail, warehouse sites, parking garages, parking lots

Product Performance

- Wattage Range: 104W-238W
- Input Voltage: 120-277V, 277-480V
- CCT: 3000K, 4000K and 5000K, Amber available*
- CRI: 70, 80 and 90 CRI*
- 20kA surge protection standard
- UL1598 Compliant
- Safety cable on driver compartment door standard
- Drivers and surge protection are easily accessible and feature quick connects for rapid replacement
- 0-10V dimmable power supply
- 5 year warranty

Accessories

- Slipfitter Mount
- Wall Mount
- 6" Arm Mount for Square Poles
- 6" Arm Mount for Round Poles
- Trunnion Mount
- Round Mast Mount Kit
- Universal Mount

* Consult factory for additional options



Driver mounted quick change component door with retaining cables

Shown with 6" Extension Arm (ALS-AE06R5XX)

Ordering Guide

Example: ALS1-5MQ-300-40K7-MVOLT-WH-SS450

ALS1	-XX	-XXX	-XXXX	-XX	-XX	-XX
Series	Distribution	Target Lumens	CCT Code	Voltage	Fixture Color	Options (Factory Installed)
ALS1	2MR - Type 2	120 - 14,000 lumens, 104W	30K8 - 3000K, 80 CRI	MVOLT - 120-277V	WH - White	SS450 - SimplySNAP On-Site Controller
	3MR - Type 3	240 - 22,000 lumens, 157W	40K7 - 4000K, 70 CRI	UH - HTRD 277-480V	SV - Silver	TE - Tool Less Entry
	4MR - Type 4	300 - 30,515 lumens, 238W	40K8 - 4000K, 80CRI		BL - Black	AN - Marine Grade Anodized Finish with 316 Stainless Steel Fasteners
	5MQ - Type 5, Square		50K7 - 5000K, 70CRI		BZ - Bronze	
	5WR - Type 5, Round		50K8 - 5000K, 80CRI			
			AMKX - Amber, Special Order			
			Other CCTs - Special Order			

Accessory Guide (Field installed, order as separate line item)

Accessory Number ¹	Description	Accessory Number ¹	Description
ALS-UMP01XX	Universal Pole Mounting Kit	ALS-AE06FXX	6" Arm Extension Kit for Square Pole
ALS-WM01XX	Wall Mount Kit	ALS-AE06R4XX	6" Arm Extension Kit for 4" Round Pole
ALS-RM01XX	Round Mast Mount Kit	ALS-AE06R5XX	6" Arm Extension Kit for 5" Round Pole
ALS-SF01XX	Slipfitter Mount	ALS-AE06R6XX	6" Arm Extension Kit for 6" Round Pole

¹ XX = WH, SV, BL or BZ



ALS1 Series

Product Specifications

Construction & Materials

- Multi stage pre-treatment and high-durability TGIC powder coat finish, optional anodized pre-treatment marine finish
- PMMA (Polymethyl methacrylate) high durability, non-discoloring lens
- Twist Lock receptacle accommodates industry standard 5-pin and 7-pin sensors
- Robust low profile design

Optical System

- Type II, III, IV, V round, V square

Electrical System

- Input Voltage: 120-277VAC, 277-480VAC
- Power Factor: > 0.9
- Total Harmonic Distortion: <20%
- 20kA surge protection
- Operating Temperature Range: -40°C to 60°C

Testing & Certifications

- cETLus Listed
- UL1598, CSA STD.22.2 compliant
- IK07 Impact Rated
- 3G Vibration Rated
- IP65 Rated
- RoHS Compliant
- DesignLights Consortium® and DesignLights Consortium® Premium Qualified Product
- Can meet ARRA Buy America requirements as required

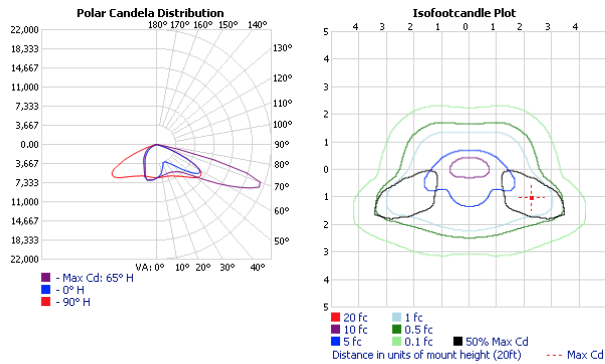
Lumen Maintenance

L70@ 25°C >100,000 hours

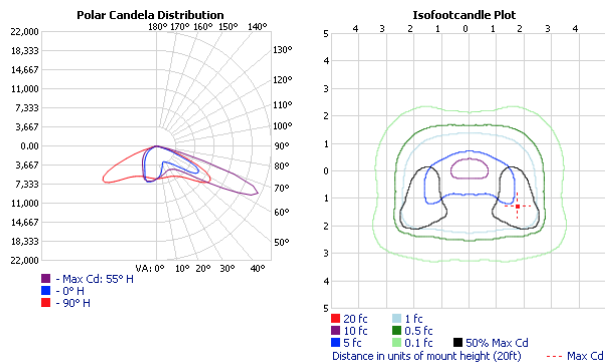
Photometry

All published photometric testing data is performed to IESNA LM79-08 standards by a NVLAP accredited laboratory. To obtain an IES file specific to your project contact sales@eluminaire.com.

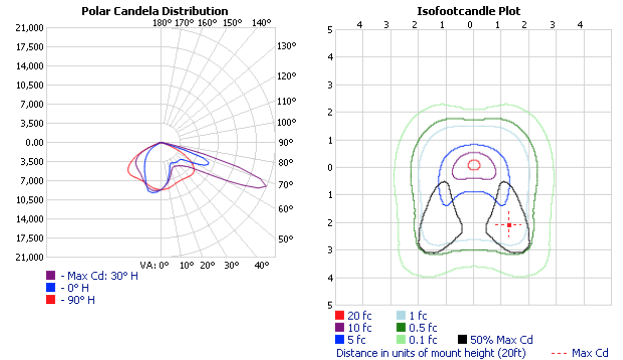
TYPE II



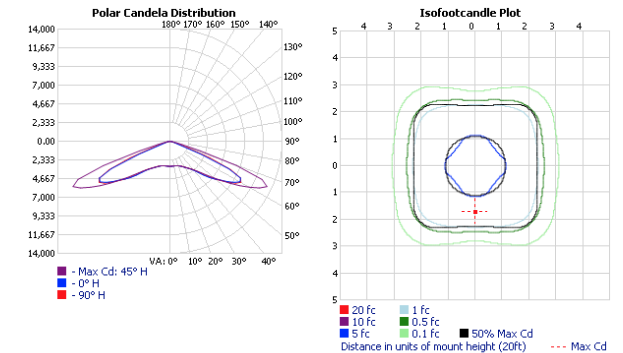
TYPE III



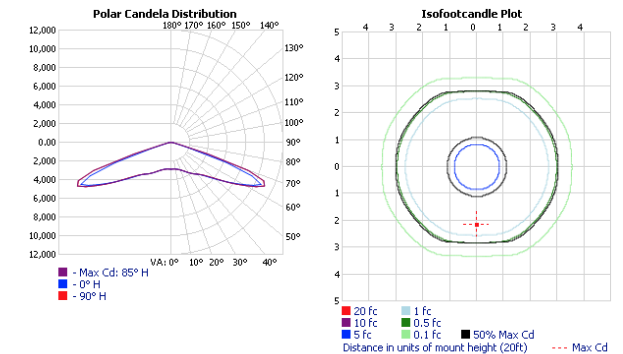
TYPE IV



TYPE V SQUARE

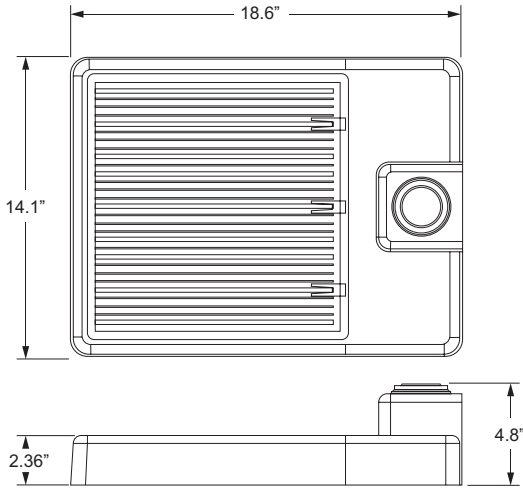


TYPE V ROUND



The information in this document is subject to change without notice.

Dimensions

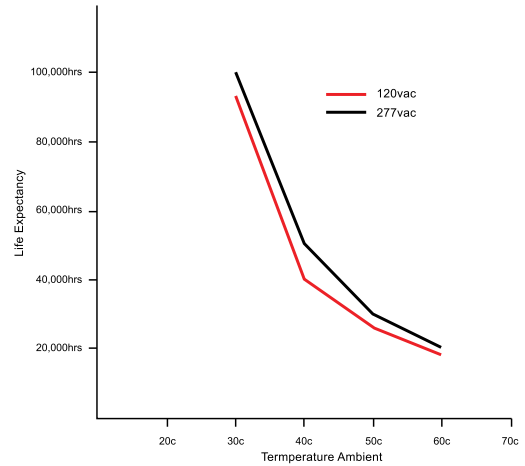


EPA: 0.5

Weight: 15.0 lb

Thermal De-Rating Curve

Life expectancy vs ambient temperature



SimplySNAP Option Details

- No Internet Required
- Multiple Zones, Behaviors, Events, and Schedules
- SimplySNAP creates a Wi-Fi connection to smart phone, tablet, or PC
- Optional SimplySNAP Remote Access (SSRA) service available
- Sunrise and Sunset Schedules driven by latitude and longitude
- Energy saving features including Daylight Harvesting and Demand Response



- Integrated Photocell
- NEMA/ANSI C136.41 7-pin Dimming Receptacle Support
- ANSI C136.52 Power Monitoring
- Remote control and scheduling
- Flexible Dimming Controls
- Secure, over-the-air upgrades to support future enhancements
- Seamless integration into the SimplySNAP lighting control system
- 24V DC Power for Motion Sensors



ALS1 Series Accessories

Accessory Guide (Field installed, order as separate line item)

Accessory Number ¹	Description	Accessory Number ¹	Description
ALS-UMP01XX	Universal Pole Mounting Kit	ALS-AE06FXX	6" Arm Extension Kit for Square Pole
ALS-WM01XX	Wall Mount Kit	ALS-AE06R4XX	6" Arm Extension Kit for 4" Round Pole
ALS-RM01XX	Round Mast Mount Kit	ALS-AE06R5XX	6" Arm Extension Kit for 5" Round Pole
ALS-SF01XX	Slipfitter Mount	ALS-AE06R6XX	6" Arm Extension Kit for 6" Round Pole

¹ XX = WH, SV, BL or BZ

All mounting accessories include hardware and necessary gaskets.
 Renderings shown below are for reference only, actual product may vary slightly. Refer to installation guide for more details.



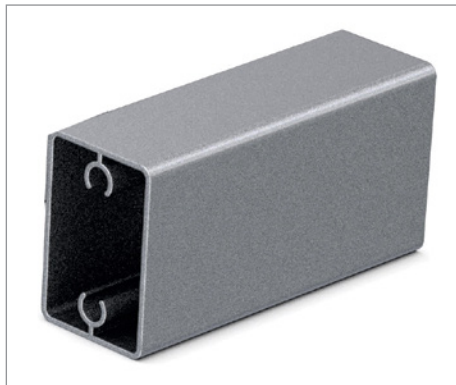
ALS-UM01XX - Universal Mounting Kit



ALS-WM01XX - Wall Mount Kit



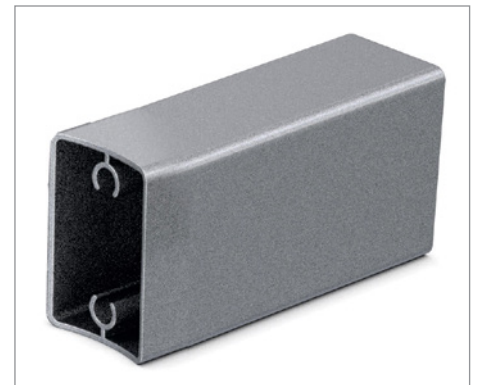
ALS-RM01XX - Round Mast Mount Kit



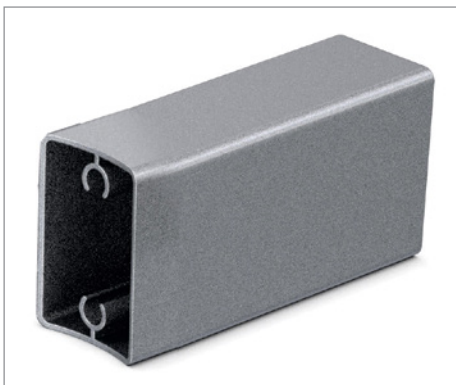
ALS-AE06FXX - 6" Arm Extension Kit for Square Pole



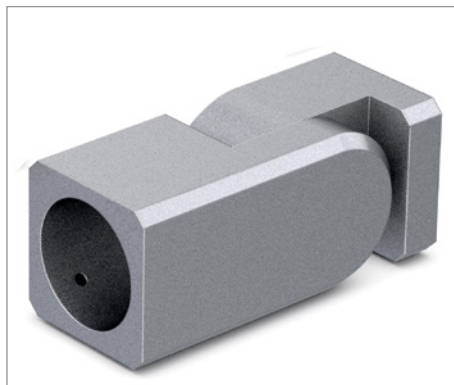
ALS-AE06R4XX - 6" Arm Extension Kit for 4" Round Pole



ALS-AE06R5XX - 6" Arm Extension Kit for 5" Round Pole



ALS-AE06R6XX - 6" Arm Extension Kit for 6" Round Pole



ALS-SF01XX - Slipfitter Mount Accessories